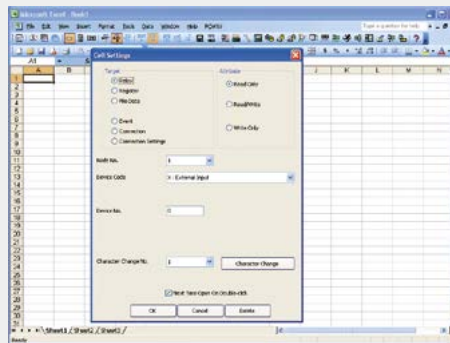
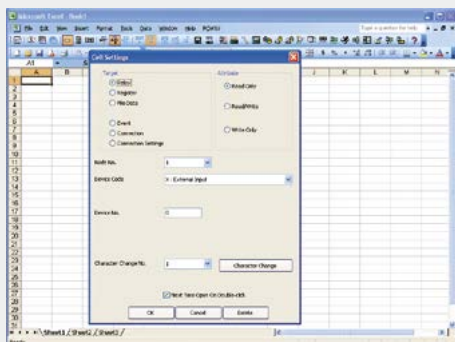


Data Monitor Software (Operation Data Managing Software) PCWAY



Cell Setting Window

PCWAY (Operation Data Managing Software)



Cell Setting Window

Add-in software for acquiring PLC data and combining it with Microsoft® Excel®, spreadsheet software.

Features

- **Effective link between a cell of Excel® and PLC relay / register**
- **Notification with an alarm and inquiry on operation status can be conducted using e-mail.**
- **Possible to connect 254 PLCs at a maximum**
- **Display change in accordance with the values of the register and relay without using the macro program**
- **Automatic data storage with a text format**
Data acquisition timing can be set flexibly. (Examples: when an event and relay turn to ON, and when periodical processing is performed using a weekly timer)
- **Enables to inform abnormality by voice**
- **With the user-registered macro program started automatically, a report can also be printed out automatically.**
- **PLC data in remote locations can be acquired via a network and modem.**

PRODUCT TYPES

Product name	Part No.
PCWAY Japanese: USB port	AFW1003
PCWAY English: USB port	AFW10031
Key unit USB port for PCWAY	AFW1033

Note: Charged version upgrade for version 2.0 or later.

Disclaimer

The applications described in the catalog are all intended for examples only. The purchase of our products described in the catalog shall not be regarded as granting of a license to use our products in the described applications. We do NOT warrant that we have obtained some intellectual properties, such as patent rights, with respect to such applications, or that the described applications may not infringe any intellectual property rights, such as patent rights, of a third party.

Panasonic
INDUSTRY

Panasonic Industry Co., Ltd.

Industrial Device Business Division

7-1-1, Morofuku, Daito-shi, Osaka 574-0044, Japan

industrial.panasonic.com/ac/e/