

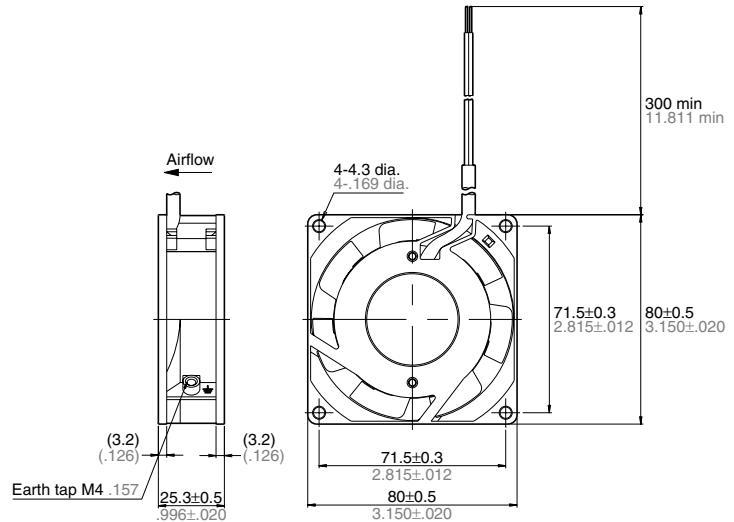
AC Fan Motor 80 sq.×25t (ASEN8)



AC Fan Motor

80 sq.×25t
(ASEN8)

DIMENSIONS (mm inch)



RoHS Directive compatibility

RATING

Lead wire type, Standard speed

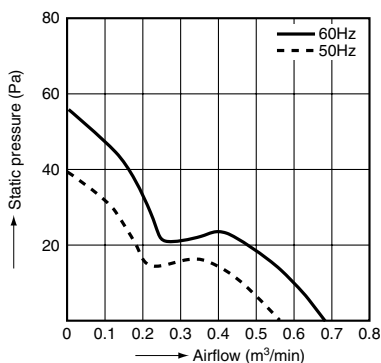
Part number	Rated voltage (V)	Frequency (Hz)	Input power, $\pm 10\%$ (W)	Rated current* ¹ (mA)	Locked current* ³ (mA)	Rotation speed* ² (r/min)	Max. air flow* ² (m ³ /min)	Max. static pressure* ² (Pa)	Noise* ³ (dB(A))	Operating voltage range (V) (%)	Weight (kg)
ASEN80214	200	50/60	7/6	60/50	70/60	2500/3000	0.57/0.68	39.0/55.0	24/31 (28.5/35.5)	±10	0.24
ASEN80216	230		7.5/6.5	50/45	60/55						

*1: Designates maximum values, *2: Designates minimum values, *3: Designates average values

Notes: 1. Values above without designations are averages.

2. Noise level was measured at a distance of 1 m from side of fan. Values in brackets were measured at a distance of 1 m from front of fan.

DATA (Airflow - Static pressure Characteristic Curve)



MATERIALS USED

Frame: aluminum alloy die-casting

Propeller: plastic

Bearings: ball bearings

Lead wires: UL3266 and AWG22

Label: 200 V class...red base

SPECIFICATIONS

Ambient temperature	-10°C to +60°C +14°F to +140°F
Ambient humidity	15 to 85%RH
Storage temperature	-20°C to +70°C -4°F to +158°F
Breakdown voltage	1,500 V AC for 1 min. (between charging section and frame)
Insulation resistance	Min. 100MΩ (at 500 V DC megger)(between charging section and frame)
Insulation class	UL:A class, CSA:B class
Frequency	10 to 55Hz
Double amplitude width	0.75mm
Applied direction	X, Y and Z directions
Applied time	10 min. in each direction
Protection	Impedance protected
Mean life	MTTF: 50,000 hrs. (Time it takes until rotation frequency drops 30% of initial value when run continuously under 25°C 77°F and room humidity at the nominal voltage.)

* UL and CSA standard: Pending

Disclaimer

The applications described in the catalog are all intended for examples only. The purchase of our products described in the catalog shall not be regarded as granting of a license to use our products in the described applications. We do NOT warrant that we have obtained some intellectual properties, such as patent rights, with respect to such applications, or that the described applications may not infringe any intellectual property rights, such as patent rights, of a third party.

Panasonic
INDUSTRY

Panasonic Industry Co., Ltd.

Industrial Device Business Division

7-1-1, Morofuku, Daito-shi, Osaka 574-0044, Japan

industrial.panasonic.com/ac/e/