

CO₂ Laser Marker

LP-200 SERIES

Related Information

- General terms and conditions..... P.1
- Sensor selection guide..... P.951~
- About laser beam..... P.1025~



FDA

Conforming to
FDA regulations
(Some models only)



This product is classified as a Class 4 Laser Product in IEC / JIS standards and a Class IV Laser Product in FDA regulations 21 CFR 1040.10. Never look at or touch the direct laser beam and its reflection.

This product is introduced to only limited countries. Please contact our office for details.

SUNX website <http://www.sunx.com>

The standard model and the tower head model enable flexible installation.

Flexible installation **Standard model LP-200/201**

As the head can be rotated, top-facing or side-facing marking is also possible. Further, since the head and the controller can be placed vertically, installation is also possible in a small space.

Small installation space **Tower head model LP-210/211**

The head, 249 × 165 mm **9.803 × 6.496 in.**, is small for a great reduction in installation space. It can be installed right in your existing line's space without any modifications.

Fine setting of marking position in 10 μm 0.394 mil steps

In case of marking minute characters, it is extremely difficult to set the marking position by moving the head. But, with the **LP-200** series, the marking position can be set in steps of 10 μm **0.394 mil** by the software.

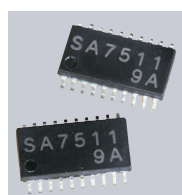
Minute character marking possible **LP-201/211**

We provide small-character types (**LP-201-A** and **LP-211-A**) optimal for minute character marking. Perfect for marking electronic components.

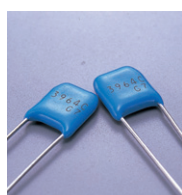
Large marking area **LP-210**

We've realized large marking area at 110 × 110 mm **4.331 × 4.331 in.** It can greatly contribute to enhanced productivity in multi-component handling IC manufacturing equipment.

MARKING SAMPLES



ICs



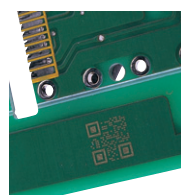
Electronic components



Product packaging



Cords



Printed circuit boards



Retort pack

- Refer to p.1025~ for laser beam.
- Please contact our office for details, such as specifications, dimensions, and prices.

FIBER
SENSORS

LASER
SENSORS

PHOTOELECTRIC
SENSORS

MICRO
PHOTOELECTRIC
SENSORS

AREA
SENSORS

SAFETY
COMPONENTS

PRESSURE
SENSORS

INDUCTIVE
PROXIMITY
SENSORS

PARTICULAR
USE SENSORS

SENSOR
OPTIONS

WIRE-SAVING
SYSTEMS

MEASUREMENT
SENSORS

STATIC CONTROL
DEVICES

LASER
MARKERS

Selection
Guide

FAYb

LP-V / LP-W

LP-F

CO₂

LP-400

LP-300

LP-200

