

Product Type Contents

Motor

Induction motor B-1

- Motor suitable for one-directional continuous running <Single-phase>
- Continuous rating
- A wide selection for various applications
- Best suitable for normal load
- IP20



Reversible motor B-63

- Offer super instant reverse characteristics <Single-phase>
- 30-minute rating
- Provided with internal simple braking mechanism
- Minimum overrun
- IP20



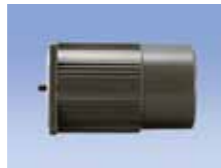
3-phase motor B-125

- Induction motor running with 3-phase supply system
- Continuous rating
- IP20



Electromagnetic brake motor B-167

- Provided with internal off brake mechanism <Single-phase motor, 3-phase motor>
- High braking and load holding torque
- IP20



Variable speed motor B-223

- Provided with internal tachometer generator
- When used with a speed controller, enables stepless speed change device
- Speed change, braking, normal/reverse, slow start, slowdown—can be operated in various modes
- Divided into 4 variations—induction, reversible, electromagnetic brake and unit <Single-phase>
- IP20



Safety standard approved motor

- Support UL, CE and CCC standards <Applicable motor>
- Induction, reversible, 3-phase, electromagnetic brake



C&B motor B-341

- Provided with clutch and brake mechanism
- Suitable for application requiring high-frequency start/stop
- IP20



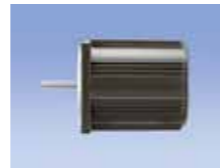
Sealed connector

- Leadwires are protected against dust, water and mechanical damage
- Motor live parts are enclosed in drip-proof and dust-proof terminal box
- Compact design, earth terminal and sealed connector for easier piping
- IP54: Pinion shaft Induction motor* (25 W to 90 W)
3-phase motor (25 W to 90 W)
- IP40: Pinion shaft Reversible motor* (25 W to 90 W)
Round shaft Induction motor* (60 W to 90 W)
Reversible motor* (60 W to 90 W)
3-phase motor (60 W to 90 W)
- IP20: Round shaft Induction motor* (25 W to 40 W)
Reversible motor* (25 W to 40 W)
3-phase motor (25 W to 40 W)
*: <Single-phase>



Round shaft motor

- Best suitable for machine requiring no speed reduction *1
- Continuous rating
- Lineup of 2-pole type and 4-pole type
- IP20
- 4-pole motors are described on pages for pinion motor
- 2-pole motor B-405
- *1: <Single-phase induction motor, 3-phase motor>



Motor line-up compliant with China's energy efficiency standards.

- 3-phase motor (25 W to 90 W)
Induction motor (15 W to 90 W) <Single-phase>
Variable speed induction motor (15 W to 90 W) *
- 2-pole round-shaft motor (40 W to 150 W) *1
- * Model name attached with Ⓢ mark in the model list page B-4, B-6, B-128, B-228, B-230, B-407 are compliant products.
- * : <Single-phase>
- *1: <Single-phase induction motor, 3-phase motor>

Gear head

Gear head

- Typical life expectancy
Ball bearing type..... 10000 hours
Metal bearing type 2000 hours
Gear head for C&B motor 5000 hours
- * Described on pages where associated motors are described.



Right-angle gear head B-446

- Motor shaft and gear head output shaft are perpendicular to each other



Gear head-Inch (U.S.A.) B-449

- These gearheads are designed according to "inch" system.
- Reduction ratios are from 1/3 to 1/200.



Decimal gear head B-448

- Reduction ratio 1/10
- Can be placed between standard motor and gear head



High torque gear head B-444

- Permissible shaft torque 29.4 N·m (260 lb-in) (60 W or larger)



Outline of motor family

Options (speed controller, brake unit)


Special (produced to custom order) For details, contact our Help Desk.

Speed controller

Separate type C-6

MGSD type


- UL-, CE-approved international type
- Wide range of input power voltage
- Single-phase 100 V system: 100 V to 120 V
- Single-phase 200 V system: 200 V to 240 V



Orders are no longer accepted later than the November 1st, 2021.

EX type


- Single-phase 100 V, 200 V
- Soft-start/soft-down and external speed setter



Orders are no longer accepted later than the end of March 2021.

Unit motor B-323 + C-21

- Quick connection of motor and controller
- Simplified operation with volume type control (US)
- <Single-phase 100 V, 200 V>



Orders are no longer accepted later than the end of March 2022.


Orders are no longer accepted later than the end of March 2022.

Brake unit

Contactless MB48X type C-27 Contacting type C-30


Contactless MB48X type

- Single-phase contactless instant control
- For: Induction motor
Reversible motor
Electromagnetic brake motor
- Wide range of input supply :
Single-phase 100 V to 230 V
- 48 mm x 48 mm (1.89 inch x 1.89 inch) square DIN type
- 11 pin



Contacting type

- Basic type of instant control
- Single-phase 100 V, 200 V
3-phase 200 V
- Rectangular type
- 8 pin

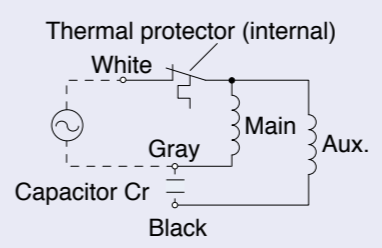


Example: Built-in thermal protector (70 mm sq. (2.76 inch sq.) or larger)

- Thermal protector is internally wired.
- The current is turned off as the temperature of motor winding exceeds the operation temperature of the thermal protector.
- Thermal protector automatically recovers as the motor winding temperature decreases. To prevent unexpected restart of the motor, turn off the motor, check safety, and then turn on the motor.

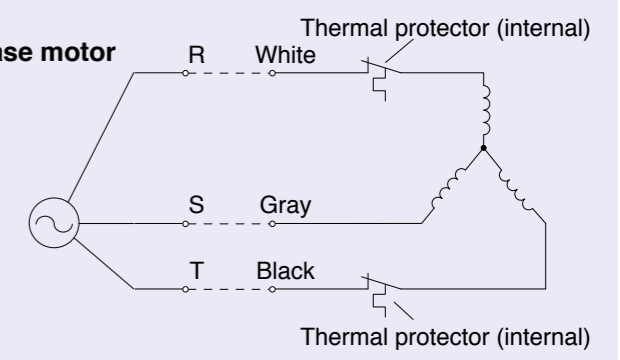
[Wiring diagram]

• Single-phase motor



CW (clockwise) connection

• 3-phase motor



CCW (counterclockwise) connection