

Panasonic

NEW

Programmable Controller

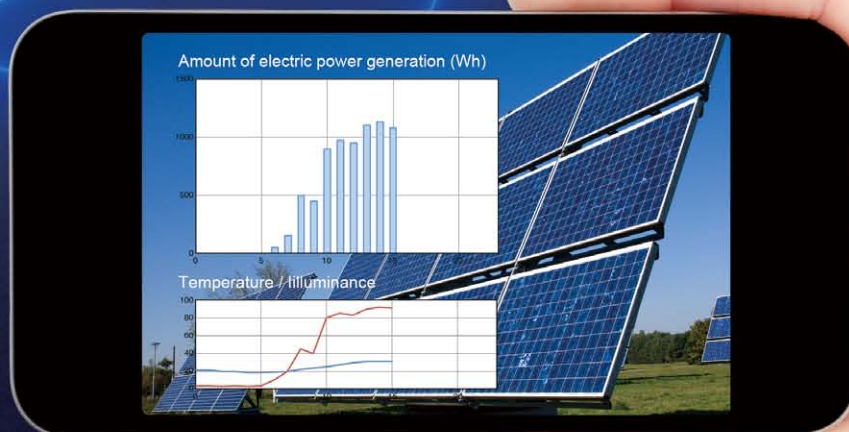
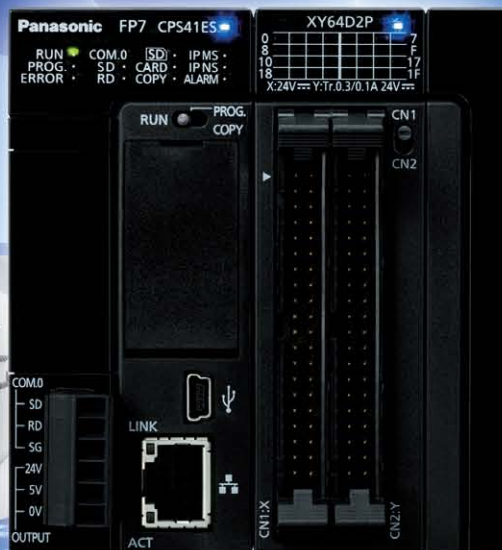
FP7 SERIES

CE
Conforming to
EMC Directive

UL
Listing

Check remotely by your smartphone!

The FP7 allows you to “Collect”, “Store”, and “Check” data



An App for Information Remotely from Smartphone or PC!

“Collect”, “Store” and “Check” information with an FP7! Traceability function can be added for existing devices!



Collect

Easy collection!

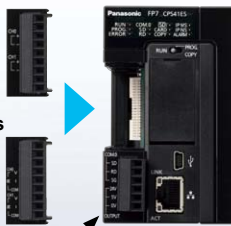
Collect work site information

The FP7 can collect voltage, electric power, temperature, production output, alarm notifications, and other information.

- Expand features without increasing installation space when adding the communication and function cassettes to the CPU unit.

Serial communication cassettes

RS232C
RS422 / RS485



Analog cassettes

Voltage, Current, Thermocouple and Resistance temperature detector

Ethernet

Maximum of 216 connections
MC protocol supported

RS232C

Store

Easy storage!

Logs collected information

The FP7 securely stores and carries out log management of collected information assets.

- Logging conditions set up is easy done via the configuration screen.
- Maximum of 16 files can be logged at the same time.
- Diagnosis of rewrite life of SD memory card helps protect valuable information assets.

*Diagnosis possible when Panasonic industrial-spec SD memory cards are used.



Easy

Simple

Economical

So convenient when you can check it!

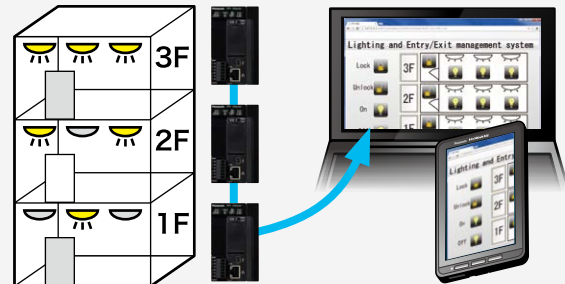
1 Check out status of greenhouse / food processing

With data always at hand, there's no need to go to the work site to check indoor temperature and humidity or the operation of pumps, heaters, and other equipment.



3 Building lighting / entry and exit management

Through a web interface, it is possible to check the status of lighting in buildings and apartments, and to building entries and exits.



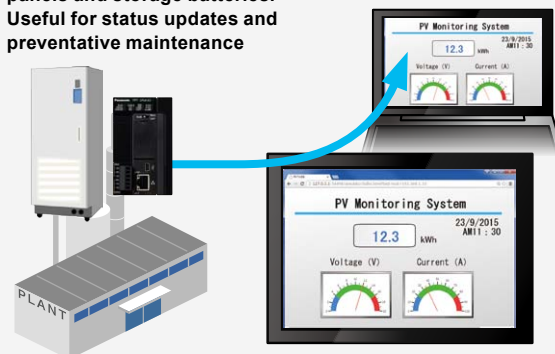
2 Operational status and production log management for production line

Operational status of the production line can be checked and traceability production control can be carried out. Current production line information can be collected and displayed on Web interface.



4 Check photovoltaic generation and rechargeable battery statuses

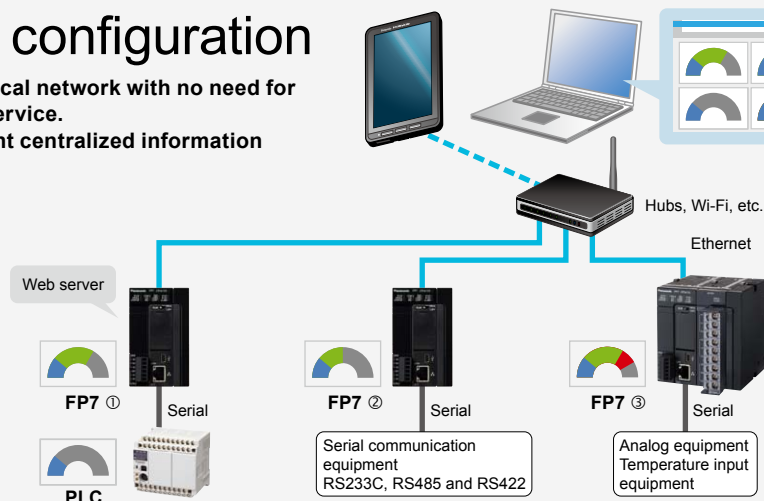
Monitor the voltage, current, and storage amount of solar panels and storage batteries. Useful for status updates and preventative maintenance



System configuration

Build into your local network with no need for joining a cloud service.

Easy to implement centralized information management.



Cloud storage unnecessary

*Wi-Fi is a registered trademark of Wi-Fi Alliance.

*Ethernet is a registered trademark of Fuji Xerox Co., Ltd. and Xerox Corporation.

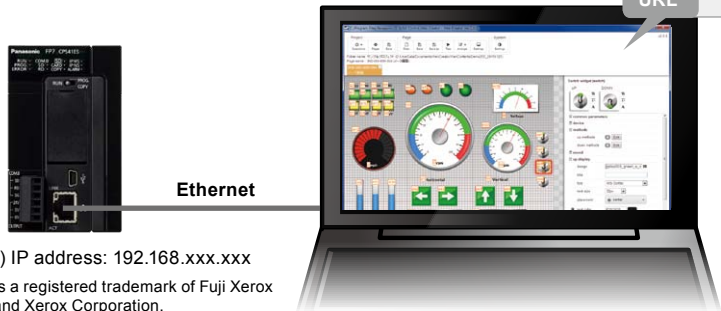
Check available in two Web contents

① Custom Web

Screens (content) that are setup as desired by the user with Control Web Creator are uploaded to the FP7. Then, the information in the FP7's internal Web server can be monitored on a browser.

Enter the URL in a browser

URL <http://192.168.xxx.xxx/>

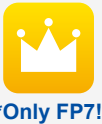


(Example) IP address: 192.168.xxx.xxx

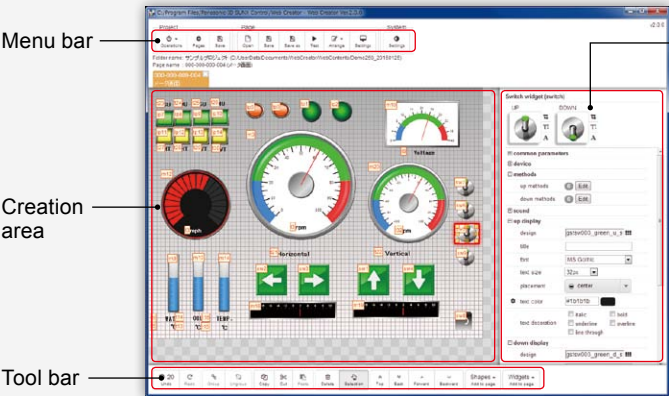
*Ethernet is a registered trademark of Fuji Xerox Co., Ltd. and Xerox Corporation.

Control Web Creator

You, too, are a Web content creator

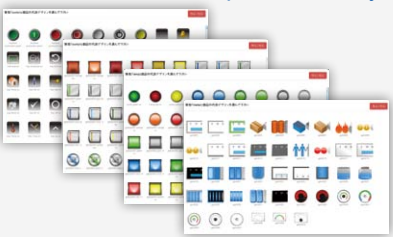


This is a graphics creation tool that allows you to easily design Web content that is published by the FP7. You can creatively design content by arranging Web components such as switches, lamps and meters on the screen and then setting the properties. Your content will be linked to information in the PLC without needing any knowledge of HTML.



Web component property settings

Abundant Web component library



- Same style of operation as the program display image creation tool
- Components can be arranged by dragging and dropping.
- Detailed component settings are easy using properties.

- Components don't lose quality when enlarged or reduced, and you can color them as desired.
- Images can be pasted in.

*Based on internal research as of June, 2015

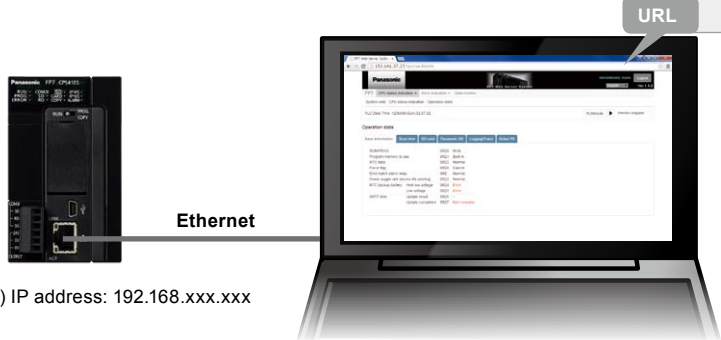
② System Web

This is the Web content that is contained as default in the CPU unit.

Status of the FP7 (settings, operation history, errors, etc.) can be checked.

Enter the URL in a browser

URL <http://192.168.xxx.xxx/sys/>



(Example) IP address: 192.168.xxx.xxx

Even without Control FPWIN GR7 ladder editing software, as long as you have a browser, you can check the FP7 status.

- You can view the data register, etc., using a PC or smartphone.

Easy

Simple

Economical

Check

Check information at
your fingertips

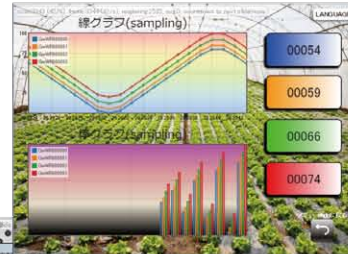
Data collected by the FP7 can be displayed
in a web browser.

Via smartphone or PC, it's easy to check the
current state of the work site.

Easy checking!

Create web page in the FP7. Web server function

- Use FP7 web page to publish information collected in the FP7.
- View using commercially available smartphones, tablets, or PCs.
- Use of a browser eliminates need for dedicated software or hardware.



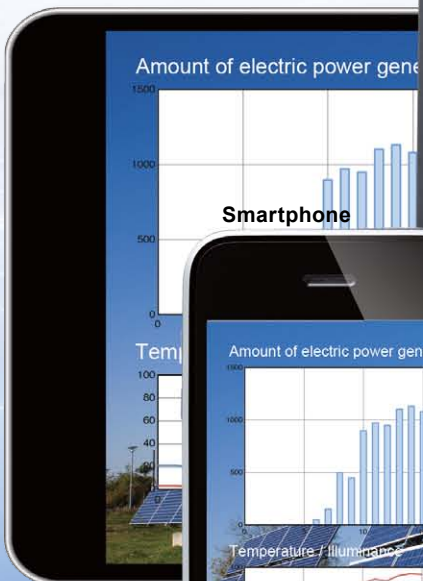
PC



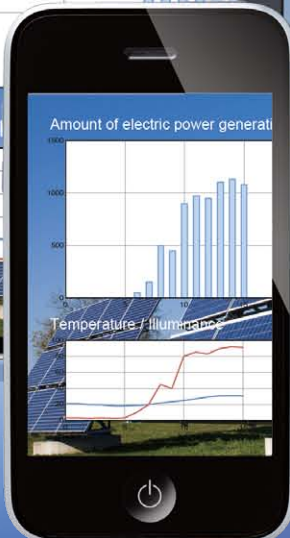
Wi-Fi router, etc.

*Please provide commercially
available products.
*Wi-Fi is a registered trademark
of Wi-Fi Alliance.

Tablet



Smartphone



Amount of electric power generation (Wh)

Temperature / Illuminance

*The LCD picture is simulated image.

Product types and Specifications

CPU units

Product name	Standard program capacity	Max. program capacity	Operation speed	Ethernet function (Note 2)	SD memory card function	Encryption function (Note 3)	Part No.
FP7 CPU units	196 k steps	234 k steps	From 11 ns	Built-in	Built-in	—	AFP7CPS41E
	120 k steps	120 k steps	From 11 ns	Built-in	Built-in	—	AFP7CPS31E
	120 k steps	120 k steps	From 11 ns	—	Built-in	—	AFP7CPS31
	196 k steps	234 k steps	From 11 ns	Built-in	Built-in	Built-in	AFP7CPS41ES
	120 k steps	120 k steps	From 11 ns	Built-in	Built-in	Built-in	AFP7CPS31ES
	120 k steps	120 k steps	From 11 ns	—	Built-in	Built-in	AFP7CPS31S
High cost performance model	64 k steps	64 k steps	From 14 ns	—	—	—	AFP7CPS21

Notes: 1) One End unit is attached to the CPU unit.

2) Ethernet function includes FTP server / client function, Web server function, HTTP client function, E-mail sending function and EtherNet/IP compatibility.

Ethernet is a registered trademark of Fuji Xerox Co., Ltd. and Xerox Corporation.

3) When exporting to China, please use a CPU that does not have an encryption function.

4) For CPU units with encryption function, please use the security enhanced type programming tools.

Web screen creation tools

Product name	Descriptions	Part No.
Control Web Creator	Windows version. Downloadable free of charge from our website. Please purchase Key unit separately.	AFPSWC
Key unit	License key for Control Web Creator . 1 license. For USB port.	AFPSWCKEY

•Key unit
AFPSWCKEY



*Key unit is required to create Web content.

You do not need Key unit to view Web content on a browser.

Web server specifications

Item	Specifications
Compatible CPU unit	Ver. 3.30 or later CPU unit with built-in Ethernet function
Web server	Number of simultaneous accesses: 16 sessions System Web: system monitor function Custom Web: 8 MB max. content capacity
Control Web Creator compatible OS	Windows® 7 or higher
Web server accessible browsers	Windows® Google Chrome Mozilla Firefox Opera Internet Explorer OS X Safari Google Chrome Mozilla Firefox iOS Safari Google Chrome Android Google Chrome

Notes: 1) Windows®, Windows 7 and Internet Explorer are trademarks or registered trademarks of Microsoft Corporation in the United States and other countries.
Google Chrome and Android are registered trademarks of Google Inc.
Safari and OS X are trademarks or registered trademarks of Apple Inc. in the United States.
iOS is a trademark or registered trademark of Cisco Systems, Inc. in the United States and other countries.
Firefox is a registered trademark of Mozilla Foundation in the United States and other countries.

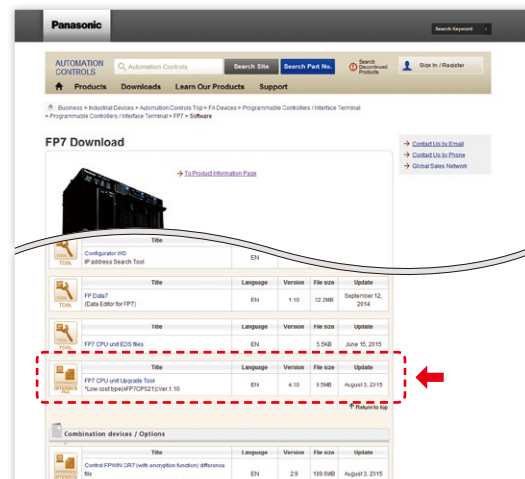
Opera is a trademark or registered trademark of Opera Software ASA.

2) Please use the latest OS and browser versions.

Latest browser versions may not work with older models.

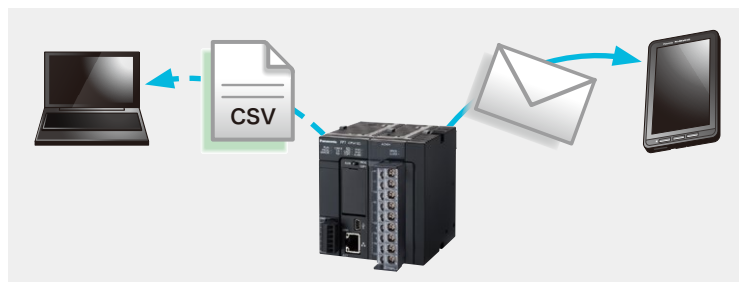
Firmware can be updated to latest version!

Update tool for latest firmware version is available on our website. Web server function can be added to CPU units listed above with built-in Ethernet function.



Introduction of FTP, email and other functions

The FP7 has abundant information-exchange features such as an FTP client / server, HTTP client, and email.



Please request
the catalog.



• This product includes software developed by the IEEE Industry Connections Security Group (ICSG)