

B1-G

Brushless Motor

Compatible with PANATERM® for BL

B1G

Speed Control

series

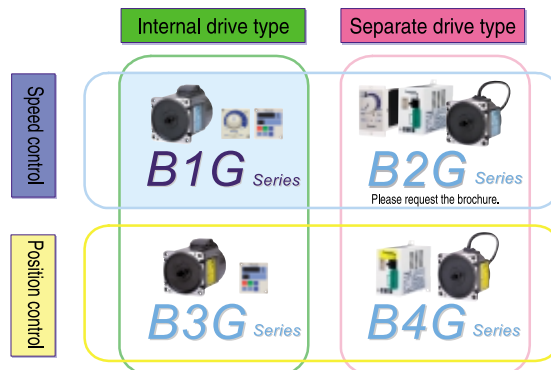


Features

Great space saver

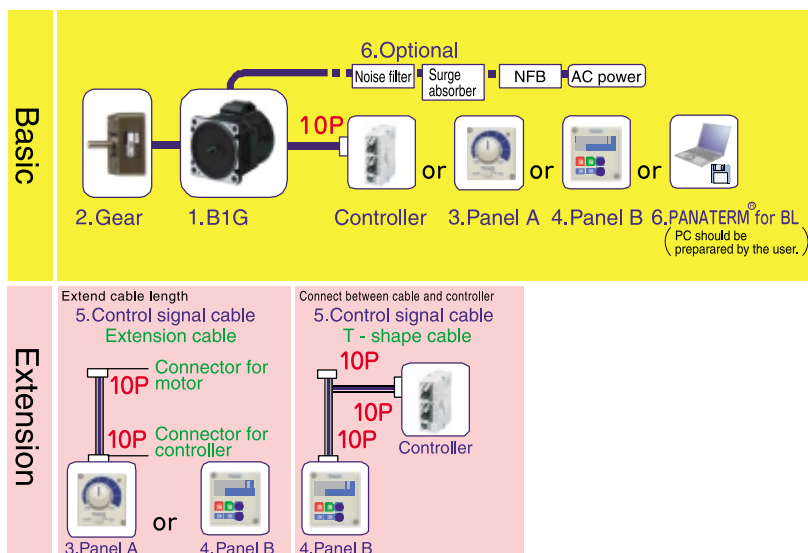
- ✓ Space saving with internal drive
- ✓ Wide speed control range with stable torque (30 to 3000 rpm)
- ✓ Smooth run with sine wave drive (Low noise, Low vibration)
- ✓ Fitting face is same as our geared motor
- ✓ Compatible with setup support software PANATERM[®] for BL
For operation monitoring by graphic waveform displays and setting/editing of parameters (e.g. acceleration/deceleration time)
- ✓ Power voltage : Single phase 100-120 & 200-240V
- ✓ CE/UL rated & IP65 rated

Product positioning (B1G)



System configuration

1. System configuration



2. Model number

1.B1G
MBMC 3A 1 A X B
B1G
 Output
 3A : 30W
 5A : 50W
 9A : 90W
 1E : 130W
 Function B : Compatible with PANATERM[®] for BL
 Shaft X : For MX8 gear
 Structure Z : For MZ9 gear
 S : Round
 Power 1 : Single 100~120V
 2 : Single 200~240V

2.Gear head
M X 8 G 30 B
 Size
 MX8 : 80mm square
 MZ9 : 90mm square
 Bearing B : Ball bearing
 Ratio (Example) 30 : 1/30
 3, 3.6, 5, 6, 7.5, 9, 10, 12.5, 15, 18, 20, 25, 30, 36, 50, 60, 75, 90, 100, 120, 150, 180, 200
 Note: 200 is available for 90mm square only

3.Panel A
DV0P3500

4.Panel B
DV0P3510

5.Control signal cable

Extension cable

DV0P35910 : 1m **10 Pins**
DV0P35930 : 3m **10 Pins**
DV0P35950 : 5m **10 Pins**

T - shape cable

DV0P37505 : 0.5m **10 Pins to 10 Pins, 10 Pins**

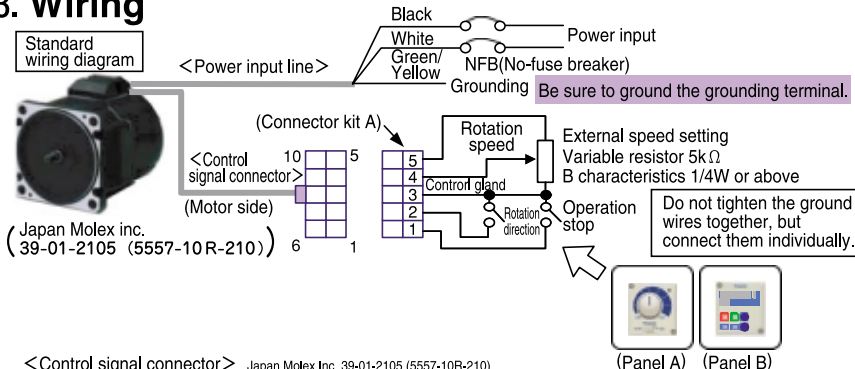
connector kit

DV0P3600 : Motor **10 Pins**
DV0P3610 : Connector **10 Pins**

6.Optional

DV0P4150 : PANATERM[®] for BL (communication software):Japanese version
DV0P4270 : PANATERM[®] for BL (communication software):English version
DV0P4386 : PANATERM[®] for BL (communication software):European version (except UK)
DV0P4140 : 1.5m PC connection cable
DV0P1450 : Surge absorber
DV0P3611-5 : Noise filter

3. Wiring



<Control signal connector> Japan Molex Inc. 39-01-2105 (5557-10R-210)

Terminal number	Terminal symbol	Terminal name	Description of function	Wire color
1	I1 ※1	Operation instruction input	Motor runs when "I1" and "GND" are shorted, and stops when they are opened.	Brown
2	I2 ※1	Rotation speed changeover input	CW operation when "I2" and "GND" are shorted, and CCW operation when they are opened. ※2	Red
3	GND	Control ground	Common ground terminal for control signal. ※3	Orange
4	FIN	Analog speed command input	Speed can be by applying voltage DC0-5V. Input impedance 100kΩ.	Yellow
5	+5V	External speed setting power supply	Power output dedicated when connecting an external variable resistor (5kΩ, B characteristics) to FIN input (Cannot be used for any other purpose.)	Green
6	O1 ※1	Trip output	Trip signal output. ※1 "L" in trip (Contact ON) Open collector Vce max : DC30V, Ic max : 50mA	Blue
7	SCK	Digital key pad I/F	Interface for digital key pad	Purple (Pink)
8	SIN			Gray
9	SOT			White
10	(N/A)	—	(Do not connect anything.)	Black

※1 Function of input/output can be changed by the Digital key pad. Default is shown.

※2 Rotation direction is that on motor shaft. When gear head is incorporated, the rotation direction of motor and that of gear output shaft are reversed for some gear reduction ratio. See the allowable shaft torque table on page 8.

(CW: Rotation clockwise when seen from the motor shaft, CCW: Rotation counterclockwise when seen from the motor shaft)

※3 When resistor, and control GND are disconnected in use of external variable resistor, 5V is input to FIN irrespective of setting of variable resistor, and upper speed limit is directed; therefore use caution enough for connecting GND.

■ See the optional connector kit A (DV0P3600) for compatible connector.

In extending the control signal wire, keep it below 5m long, and use wire rod above AWG26 (0.12mm²).

Specification

Specification

Model number		Output (W)	Input power				Rated torque (N·m)	Start torque (N·m)	Rated speed (r/min)
Geared shaft	Round shaft		Voltage AC (V)	Error (%)	f (Hz)	Current (A)			
MBMC3A1AXB	MBMC3A1ASB	30	Single 100~120	± 10	50/60	1.0	0.095	0.14	3000
MBMC3A2AXB	MBMC3A2ASB		Single 200~240			0.6			
MBMC5A1AXB	MBMC5A1ASB	50	Single 100~120			1.5	0.16	0.24	
MBMC5A2AXB	MBMC5A2ASB		Single 200~240			0.7			
MBMC9A1AZB	MBMC9A1ASB	90	Single 100~120			2.0	0.29	0.43	
MBMC9A2AZB	MBMC9A2ASB		Single 200~240			1.1			
MBMC1E2AZB	MBMC1E2ASB	130	Single 200~240			1.5	0.41	0.62	

Common specification

Item		Description			
Model number		MBMC3A****	MBMC5A****	MBMC9A****	MBMC1E****
Rated output(W)		30	50	90	130
Control speed		30~3000 r/min (Speed ratio 1:100)			
Speed fluctuation	Load	±1% or less (Rated speed & 0 to rated torque)			
	Voltage	±1% or less (Power source voltage±10% & Rated speed)			
	Temperature	±1% or less (−10~40℃ & Rated speed)			
Accel/Decele time		0.3 seconds (Time from to 1000 r/min)※			
Stop method		Free run & Stop※			
Speed setting		0~3000 r/min (Analogue voltage (0~5V), Set by Panel A or Panel B)			
Accuracy of set speed (At 20℃)		Analogue : ±3% or less of upper limit speed (±90 r/min or less when upper limit is 3000r/min) [Digital : 1% or less of upper limit speed]			
Protective function		Under-voltage warning※ (Under-voltage protection※), Over-load, Over-current, Regenerative over-voltage, Parameter error, CPU error, Over-speed, Sensor error, Over-heat			
Insulation level		1 3 0 (B) (UL certified 1 0 5 (A))			
Rated time		Continuous			30 minutes or Continuous at 80% loading
		(Do not run motor continuously with force from outside such as winding it down; No continuous regenerative operation.)			
Overload warning level		100%			80%
Time limit at overload		60 seconds at 150% loading			
IP rating		Motor is IP65 rated, excluding foot of shaft and end of lead wires EN standard(EN60529,EN60034-5) Not suitable to application where motor is exposed to or in water for long.			
		Panel A and Panel B is IP20 rated.			
Mass (kg)		1.1	1.3	2.3	2.3

※ Can be set by Panel B.

Acceptable torque with gear (N·m)

Model#	ratio	3	3.6	5	6	7.5	9	10	12.5	15	18	20	25	30	36	50	60	75	90	100	120	150	180	200
MBMC3A□AXB MX8G□B		0.23	0.28	0.38	0.46	0.58	0.69	0.77	0.96	1.15	1.39	1.55	1.93	2.16	2.60	3.55	4.36	5.43	6.45	6.99	7.84	7.84	7.84	—
MBMC5A□AXB MX8G□B		0.39	0.46	0.64	0.77	0.96	1.16	1.29	1.61	1.92	2.33	2.59	3.23	3.61	4.33	5.93	7.29	7.84	7.84	7.84	7.84	7.84	7.84	—
MBMC9A□AZB MZ9G□B		0.67	0.81	1.12	1.34	1.69	2.02	2.28	2.54	3.06	3.72	4.11	5.27	6.22	6.96	9.81	11.7	14.7	17.3	19.0	19.6	19.6	19.6	19.6
MBMC1E□AZB MZ9G□B		1.01	1.21	1.69	2.02	2.54	3.04	3.42	3.82	4.59	5.58	6.17	7.91	9.34	10.5	14.7	17.5	19.6	19.6	19.6	19.6	19.6	19.6	19.6

※ At □, shaft of gear head runs in same way as motor runs.

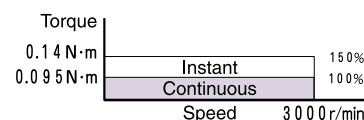
Acceptable load inertia moment (×10⁻⁴kg·m²)

Acceleration/Deceleration time is 0.3 seconds.

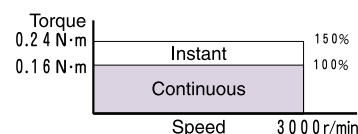
Model#	ratio	3	3.6	5	6	7.5	9	10	12.5	15	18	20	25	30	36	50	60	75	90	100	120	150	180	200	No gear
MBMC3A□AXB MBMC5A□AXB MX8G□B		1.25	1.79	3.42	4.90	7.72	11.2	13.8	21.6	30.6	45.2	55.8	86.9	127	183	342	342	342	342	342	342	342	342	—	2.5
MBMC9A□AZB MBMC1E□AZB MZ9G□B		5.93	8.47	16.4	23.6	37.3	53.4	67.6	98.3	142	211	257	423	589	847	1684	1684	1684	1684	1684	1684	1684	1684	1684	5.6

Speed-Torque

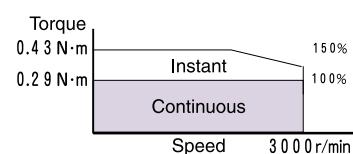
MBMC3A1AXB/MBMC3A1ASB
MBMC3A2AXB/MBMC3A2ASB



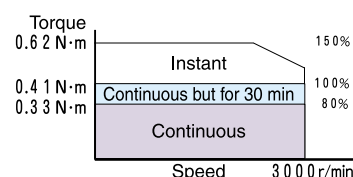
MBMC5A1AXB/MBMC5A1ASB
MBMC5A2AXB/MBMC5A2ASB



MBMC9A1AZB/MBMC9A1ASB
MBMC9A2AZB/MBMC9A2ASB



MBMC1E2AZB/MBMC1E2ASB



Life time

-Motor alone

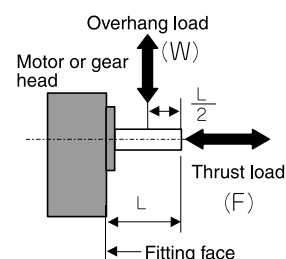
10,000 hours

-Motor with gear head

5,000 hours

(Oil seal performance is 5,000 hours long.)

Acceptable load on shaft

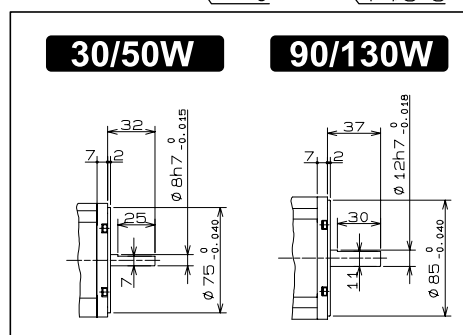
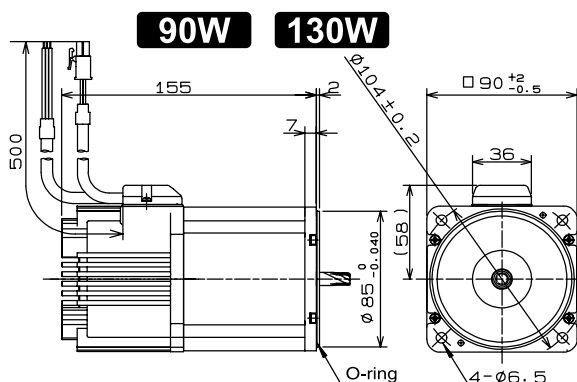
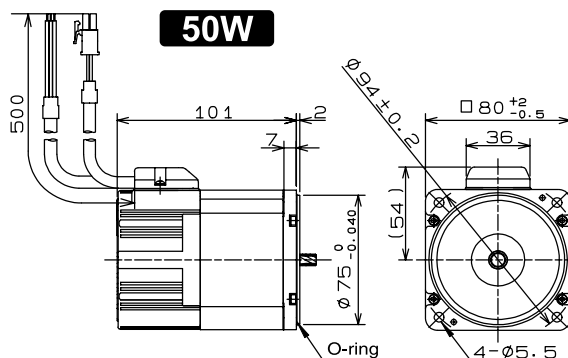
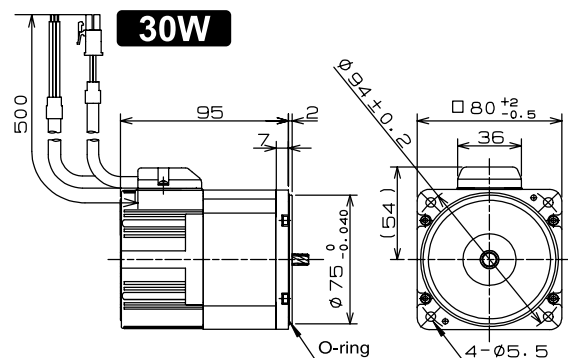


	Output	Overhang (W)	Thrust (F)
Motor only	30W	100N	10N
	50W	100N	10N
	90W	150N	20N
	130W	150N	20N
Gear head	MX8G	294N	49N
	MZ9G	588N	147N

● Drawing

(Unit : mm)

Motor

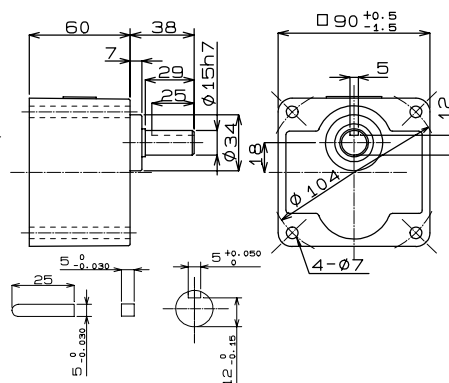
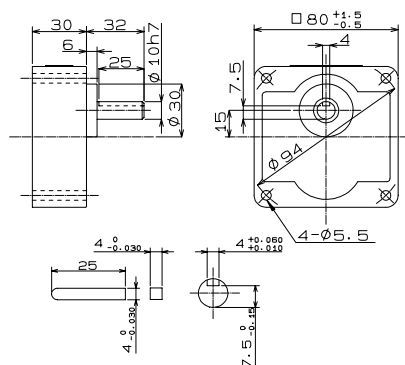


Details of round shaft

Gear head

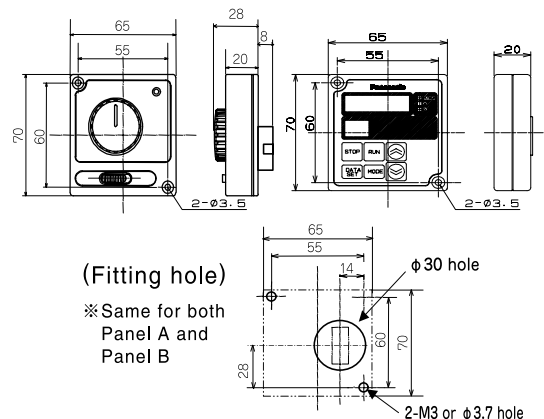
● MX8G□B (For 30W & 50W motor)

● MZ9G□B (For 90W & 130W motor)



Panel A

Panel B



(Fitting hole)

※ Same for both Panel A and Panel B

Cautions for Proper Use

- This product is intended to be used with a general industrial product, but not designed or manufactured to be used in a machine or system that may cause personal death when it is failed.
- Install a safety equipments or apparatus in your application, when a serious accident or loss of property is expected due to the failure of this product.
- Consult us if the application of this product is under such special conditions and environments as nuclear energy control, aerospace, transportation, medical equipment, various safety equipments or equipments which require a least air contamination.
- We have been making the best effort to ensure the highest quality of the products, however, application of exceptionally larger, external noise disturbance and static electricity, or failure in input power, wiring and components may result in unexpected action. It is highly recommended that you make a fail-safe design and secure the safety in the operative range.
- If the motor shaft is not electrically grounded, it may cause an electrolytic corrosion to the bearing, depending on the condition of the machine and its mounting environment, and may result in the bearing noise. Checking and verification by customer is required.
- Failure of this product depending on its content, may generate smoke of about one cigarette. Take this into consideration when the application of the machine is clean room related.
- Please be careful when using in an environment with high concentrations of sulphur or sulphuric gases, as sulphuration can lead to disconnection from the chip resistor or a poor contact connection.
- Take care to avoid inputting a supply voltage which significantly exceeds the rated range to the power supply of this product. Failure to heed this caution may result in damage to the internal parts, causing smoking and/or a fire and other trouble.
- Read and observe the instruction manual without fail for proper usage of the products.