

UL Standard Motor / Single Phase Induction

UL規格批准馬達 單相感應馬達

UL규격 인정 모터 단상 인덕션 모터

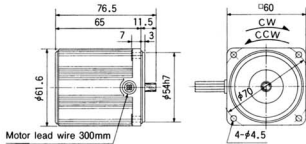
Motor

Scale 1/4 Unit mm

M6IA3G4DU 4P 3W 100~115~120V

60
mmSQ,
3W

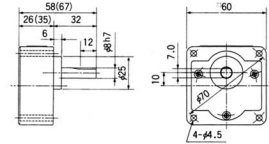
Weight 0.56kg
helical gear
module 0.5
number of teeth 10



Gear Head

Scale 1/4 Unit mm

M6GA□M (metal bearing type) weight 0.2kg
M6GA□B (ball bearing type)

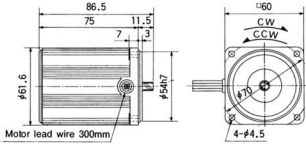


Note : The value in "()" is for gear ratio of 1/20 or larger.

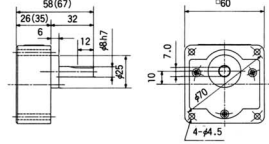
M6IA6G4DU 4P 6W 100~115~120V

60
mmSQ,
6W

Weight 0.67kg
helical gear
module 0.5
number of teeth 10



M6GA□M (metal bearing type) weight 0.34kg
M6GA□B (ball bearing type)

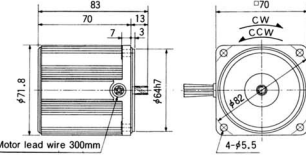


Note : The value in "()" is for gear ratio of 1/20 or larger.

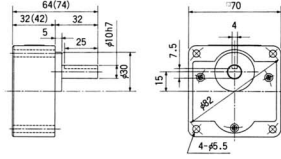
M7IA10G4DU 4P 10W 100~115~120V

70
mmSQ,
10W

Weight 0.84kg
helical gear
module 0.5
number of teeth 10

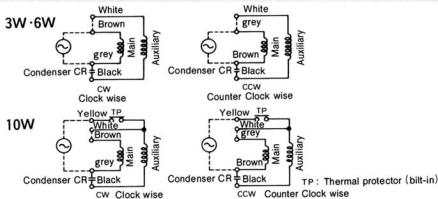


M7GA□M (metal bearing type) weight 0.34kg
M7GA□B (ball bearing type)



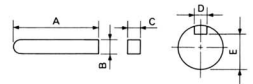
Note : The value in "()" is for gear ratio of 1/20 or larger.

Connecting Diagram



Key and Key Slot

M7GA□M(B)



Type	A	B	C	D	E
M7GA□M(B)	25	4 -0.030	4 -0.030	4+0.050 +0.010	7.5 -0.15

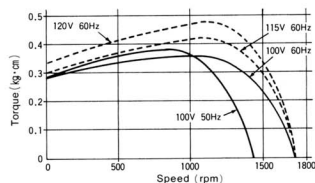
Specifications

Size mmsq	Type	poles	Output (W)	Voltage (V)	Frequency (Hz)	Duty	Rated load				Starting Current (A)	Starting Torque (kg·cm)	Capacitor μF(V)	Applied gearhead type				
							Input (W)	Current (A)	Speed (rpm)	Torque (kg·cm)				Metal	Ball	Decimal		
60	M6IA3G4DU	4	3	100	50	CONT.	15	0.15	1300	0.22	0.20	0.28	2(200V)	M6GA□M	M6GA□B	M6GA10XM		
					15		0.15	1600	0.18	0.20	0.28							
					115		60	15	0.14	1625	0.18	0.21	0.30					1.5(250V)
					120		60	17	0.14	1650	0.17	0.21	0.33					
60	M6IA6G4DU	4	6	100	CONT.	18	0.18	1150	0.47	0.23	0.43	2.5(200V)	M6GA□M	M6GA□B	M6GA10XM			
				60		19	0.19	1475	0.39	0.24	0.43							
				115		60	20	0.17	1575	0.37	0.25	0.46					2(250V)	
				120		60	21	0.17	1600	0.36	0.26	0.49						
70	M7IA10G4DU	4	10	100	CONT.	26	0.27	1250	0.76	0.42	0.62	3(200V)	M7GA□M	M7GA□B	M7GA10XM			
				60		26	0.26	1575	0.60	0.41	0.62							
				115		60	26	0.25	1600	0.60	0.44	0.45					2(250V)	
				120		60	27	0.25	1600	0.60	0.46	0.47						

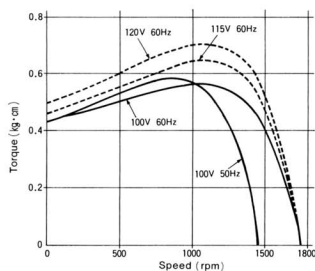


Speed-Torque Curve

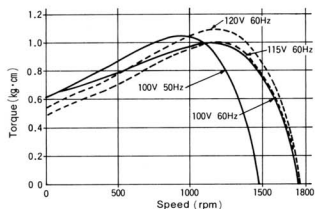
M6IA3G4DU



M6IA6G4DU



M7IA10G4DU



齒輪馬達最大承受扭力對照表

rpm表列數字乃根據馬達同步運轉之轉速，但在額定扭力負載情況下實際輸出轉速為同步運轉轉速的80~98%。灰色欄乃輸出軸運轉方向與馬達相同時的數據資料。白色欄乃輸出軸運轉方向與馬達相反時的數據資料。

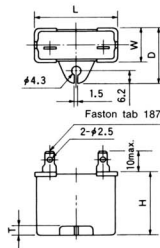
GEAR HEAD를 直結했을 때의 許容토크르크

★ 回転数は 周波数の 中面ギアヘッドに 値(註)を 表示하고 있습니다. 一般 回転数は負荷의 크기에 따라 表示値보다 2%~20% 작은(值)을 표시합니다.

★ 回転方向은 □ 이 모터의 同方向 他는 逆方向입니다.

Capacitor

Option



Dimensions of Capacitor (mm)

Motor Type		Capacitor Type	L	W	D	H	T
M6IA3G4DU	100V	MOPC2M20	39.5	16	26.5	30.5	4
	115V 120V	MOPC1.5M25	39.5	16	26.5	30.5	4
M6IA6G4DU	100V	MOPC2.5M20	39.5	16	26.5	30.5	4
	115V 120V	MOPC2M25	39.5	16	26.5	30.5	4
M7IA10G4DU	100V	MOPC3M20	39.5	16	26.5	30.5	4
	115V 120V	MOPC2M25	39.5	16	26.5	30.5	4

Geared motor maximum permissible torque table [kg·cm]

Note : rpm figures are based on synchronous speed. The actual output rpm, under rated torque conditions, is about 2~20% less than synchronous speed. A grey background indicates that the output shaft of the geared motor rotates in the same direction as the output shaft of the motor. A white background indicates rotation in the opposite direction.

	Speed (rpm)	With decimal gearhead																	
		500	300	200	180	150	120	100	90	75	60	50	30	20	15	10	9	7.5	6
Gear reduction ratio	50Hz	3	5	7.5	—	—	10	12.5	15	18	—	20	30	36	50	75	100	150	180
	60Hz	3.6	6	9	10	—	15	18	20	—	25	30	50	60	90	120	180	200	300
Maximum permissible torque (kg·cm)	50Hz	0.49	0.81	1.2	1.3	1.6	2.0	2.4	2.6	3.2	3.9	4.7	7.8	11	15	22	25	25	25
	60Hz	1.0	1.6	2.5	2.7	3.4	4.1	5.0	5.4	6.7	8.1	9.7	16	23	25	25	25	25	25
Maximum permissible torque (kg·cm)	50Hz	1.6	2.6	3.9	4.5	5.2	6.5	7.9	8.7	10	13	15	26	37	49	50	50	50	50
	60Hz	1.6	2.6	3.9	4.5	5.2	6.5	7.9	8.7	10	13	15	26	37	49	50	50	50	50

Note : The box (□) represents the desired gear reduction ratio, which thereby becomes part of the code for geared motor.

UL Standard Motor / Single Phase Induction

UL規格批准馬達 單相感應馬達
UL규격 인정 모터 단상 인덕션 모터

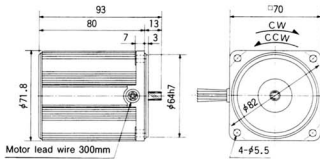
Motor

M71A15G4DU 4P 15W 100-115-120V

Scale 1/4 Unit mm

70
mmSQ,
15W

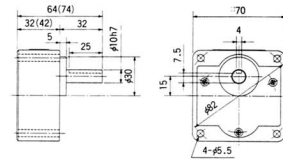
Weight 1.04kg
helical gear
module 0.5
number of teeth 10



Gear Head

M7GA□M (metal bearing type) weight 0.54kg
M7GA□B (ball bearing type)

Scale 1/4 Unit mm

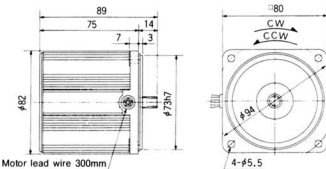


Note : The value in "()" is for gear ratio of 1/20 or larger.

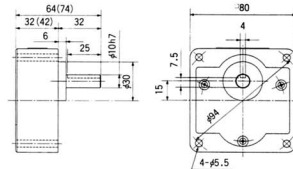
M81A15G4DU 4P 15W 100-115-120V

80
mmSQ,
15W

Weight 1.2kg
helical gear
module 0.6
number of teeth 11



M8GA□M (metal bearing type) weight 0.68kg
M8GA□B (ball bearing type)

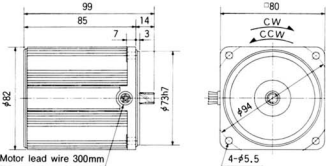


Note : The value in "()" is for gear ratio of 1/20 or larger.

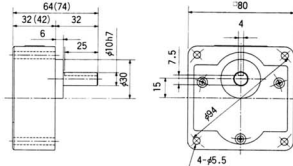
M81A25G4DU 4P 25W 100-115-120V

80
mmSQ,
25W

Weight 1.5kg
helical gear
module 0.6
number of teeth 11

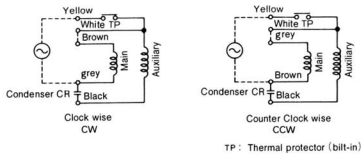


M8GA□M (metal bearing type) weight 0.68kg
M8GA□B (ball bearing type)



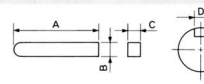
Note : The value in "()" is for gear ratio of 1/20 or larger.

Connecting Diagram



Key and Key Slot

M7GA□M (B)
M8GA□M (B)



Type	A	B	C	D	E
M7GA□M (B)	25	4 0 -0.030	0 4 -0.030	0 4 +0.060 -0.010	7.5 0 -0.15
M8GA□M (B)	25	4 0 -0.030	0 4 -0.030	0 4 +0.060 -0.010	7.5 0 -0.15

Specifications

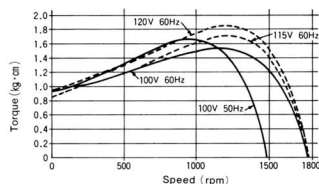
Size mmsq.	Type	poles	Output (W)	Voltage (V)	Frequency (Hz)	Duty	Rated load				Starting Current (A)	Starting Torque (kg-cm)	Capacitor μF(V)	Applied gearhead type				
							Input (W)	Current (A)	Speed (rpm)	Torque (kg-cm)				Metal	Ball	Decimal		
70	M71A15G4DU	4	15	100	50	CONT.	33	0.36	1300	1.1	0.63	0.90	4(200V)	M7GA□M	M7GA□B	M7GA10XM		
					33		0.34	1600	0.90	0.59	0.90							
					115		60	33	0.31	1625	0.90	0.67	0.85					3(250V)
					120		60	35	0.32	1650	0.90	0.69	0.92					
					50		35	0.36	1275	1.1	0.61	0.95	4(200V)					
60	37	0.37	1550	0.90	0.59	0.95												
80	M81A15G4DU	4	15	100	50	CONT.	34	0.31	1650	0.89	0.65	0.95	3(250V)	M8GA□M	M8GA□B	M8GA10XM		
					60		35	0.31	1650	0.88	0.68	1.1						
					115		60	52	0.57	1325	1.8	1.2	1.4					6(200V)
					120		60	48	0.48	1625	1.5	1.1	1.4					
					50		50	0.49	1650	1.5	1.2	1.4	4.5(230V)					
60	51	0.49	1675	1.5	1.3	1.5												
80	M81A25G4DU	4	25	100	50	CONT.	52	0.57	1325	1.8	1.2	1.4	6(200V)	M8GA□M	M8GA□B	M8GA10XM		
					60		48	0.48	1625	1.5	1.1	1.4						
					115		60	50	0.49	1650	1.5	1.2	1.4					4.5(230V)
					120		60	51	0.49	1675	1.5	1.3	1.5					
					50		52	0.57	1325	1.8	1.2	1.4						

TP : Thermal protector (built-in)

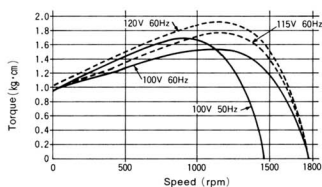


Speed-Torque Curve

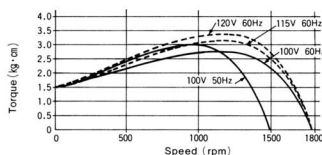
M71A15G4DU



M81A15G4DU

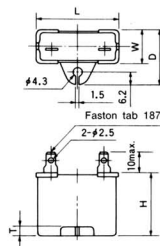


M81A25G4DU



Capacitor

Option



■ Dimensions of Capacitor (mm)

Motor Type	Capacitor Type	L	W	D	H	T
M71A15G4DU	100V MOPC4M20	39.5	16	26.5	30.5	4
	115V 120V MOPC3M25	39.5	16	26.5	30.5	4
M81A15G4DU	100V MOPC4M20	39.5	16	26.5	30.5	4
	115V 120V MOPC3M25	39.5	16	26.5	30.5	4
M81A25G4DU	100V MOPC6M20	39.5	17.5	28	30.5	4
	115V 120V MOPC4.5M23	39.5	16	26.5	30.5	4

■ Geared motor maximum permissible torque table [kg·cm]

Note : rpm figures are based on synchronous speed. The actual output rpm, under rated torque conditions, is about 2~20% less than synchronous speed. A grey background indicates that the output shaft of the geared motor rotates in the same direction as the output shaft of the motor. A white background indicates rotation in the opposite direction.

■ 齒輪馬達最大承受扭力對照表

rpm表列數字乃根據馬達同步運轉之轉速，但在額定扭力負載情況下實際輸出轉速為同步運轉轉速的80~98%。灰色欄乃輸出軸運轉方向與馬達相同時的數據資料。白色欄乃輸出軸運轉方向與馬達相反時的數據資料。

■ GEAR HEAD를 직결했을 때의許容토크

★ 回転数は 同期速度の 中間ギアネード値(값)를 表示하고 있습니다. 一般 回転数は負荷의 크기에 따라 表示値보다 2%~20% 작은(值)를 표시합니다.

★ 回転方向은 □ 이 모터의 同方向 他는 逆方向입니다.

	Speed (rpm)	With decimal gearhead																
		500	300	200	180	150	120	100	90	75	60	50	30	20	15	10	9	7.5
Gear reduction ratio	50Hz	3	5	7.5	—	12.5	15	—	20	25	30	50	75	100	150	200	250	300
	60Hz	3.6	6	9	10	—	15	18	20	—	30	36	60	90	120	180	200	—
Maximum permissible torque (kg·cm)		2.4	2.4	4.0	6.0	6.7	8.2	10	12	13	16	19	23	39	50	50	50	50
		2.4	2.4	6.0	6.7	6.7	8.2	10	12	13	16	19	23	39	56	75	80	80
Maximum permissible torque (kg·cm)		4.0	4.0	6.7	10	11	13	16	20	21	26	32	39	65	80	80	80	80
		4.0	4.0	6.7	10	11	13	16	20	21	26	32	39	65	80	80	80	80

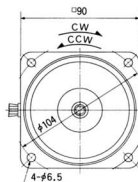
Note : The box (□) represents the desired gear reduction ratio, which thereby becomes part of the code for geared motor.

UL규격 인정 모타 단상 인닥션 모타

Scale 1/4 Unit mm

M9IA40G4DU 4P 40W 100-115-120V

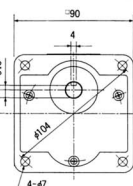
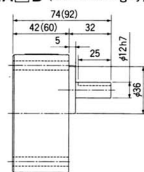
Technical drawing of the motor assembly showing dimensions: 122, 105, 7.5, 3, 17, 52, 83.7, and 300mm for the motor lead wire.



Scale 1/4 Unit mm

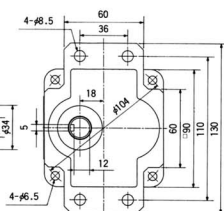
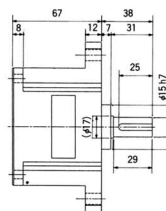
M9GA□M (metal bearing type) weight 1.2kg

M9GA□B (ball bearing type)

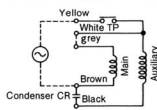
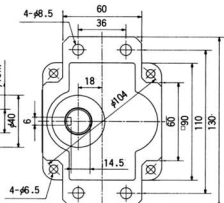
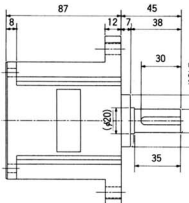


Note : The value in "()" is for gear ratio of 1/20 or larger.

M9GC□B (ball bearing type) 1.5kg



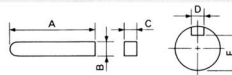
M9GS□B (ball bearing type) 1.9kg



Counter Clock wise
CCW
TP : Thermal protector (built-in)

Key and Key Slot

M9GA□M(B)

M9GC ☐ BM9GS ☐ B

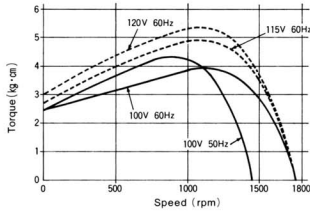
Type	A	B	C	D	E
M9GA□M(B)	25	$4 \begin{smallmatrix} 0 \\ -0.030 \end{smallmatrix}$	$4 \begin{smallmatrix} 0 \\ -0.030 \end{smallmatrix}$	$4 \begin{smallmatrix} +0.060 \\ +0.010 \end{smallmatrix}$	$9.5 \begin{smallmatrix} 0 \\ -0.15 \end{smallmatrix}$
M9GC□(B)	25	$5 \begin{smallmatrix} 0 \\ -0.030 \end{smallmatrix}$	$5 \begin{smallmatrix} 0 \\ -0.030 \end{smallmatrix}$	$5 \begin{smallmatrix} +0.050 \\ +0 \end{smallmatrix}$	$12 \begin{smallmatrix} 0 \\ -0.15 \end{smallmatrix}$
M9GS□(B)	30	$6 \begin{smallmatrix} 0 \\ -0.030 \end{smallmatrix}$	$6 \begin{smallmatrix} 0 \\ -0.030 \end{smallmatrix}$	$6 \begin{smallmatrix} +0.050 \\ 0 \end{smallmatrix}$	$14.5 \begin{smallmatrix} 0 \\ -0.15 \end{smallmatrix}$

■ Specifications

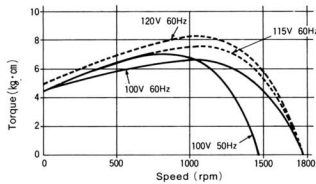
Size mmsq.	Type	poles	Output (W)	Voltage (V)	Frequency (Hz)	Duty	Rated load				Starting	Starting	Capacitor	Applied gearhead type				
							Input (W)	Current (A)	Speed (rpm)	Torque (kg·cm)	Current (A)	Torque (kg·cm)	Capacitor µF (V)	Metal	Ball	Decimal		
90	M9IA40G4DU	4	40	100	50	CONT.	79	0.87	1250	3.1	1.6	2.4	10(200V)	M9GA□M	M9GA□B	M9GA10XM		
					74		0.74	1575	2.5	1.5	2.4							
					115		60	76	0.72	1625	2.4	1.7	2.7					8(230V)
					120		60	78	0.72	1650	2.4	1.8	3.0					
					90		M9IC60G4DU	4	60	100	CONT.	114	1.3					
114	1.2	1575	3.7	2.2		4.5												
115	60	115	1.1	1625		3.6						2.4	4.5	12(230V)				
120	60	121	1.1	1625		3.6						2.5	5.0					
90	M9IC90G4DU	4	90	100		CONT.						154	1.6		1325	6.5	3.4	4.8
					161		1.7	1625	5.3	3.1	4.8							
					115		60	157	1.4	1650	5.3	3.5	4.8	19(230V)				
					120		60	163	1.4	1675	5.2	3.7	5.2					

Speed-Torque Curve

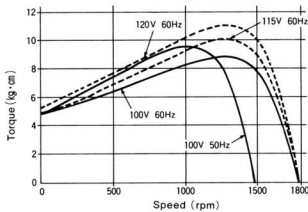
M9IA40G4DU



M9IC60G4DU



M9IC90G4DU



齒輪馬達最大承受扭力對照表

rpm表列數字乃根據馬達同步運轉之轉速，但在額定扭力負載情況下實際輸出轉速為同步運轉轉速的80～98%。灰色欄乃輸出軸運轉方向與馬達相同時的數據資料，白色欄乃輸出軸運轉方向與馬達相反時的數據資料。

GEAR HEAD를 직결했을 때의 許容轉速르크

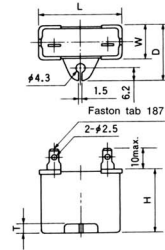
★回轉數는 同期速도의 中間기어헤드에 值(값)을 表示하고 있습니다. 一般 回轉數는負荷의 크기에 따라 表示值보다 2%～20% 작은(值)을 표시합니다.

★回轉方向은 □ 이 모터와 同方向 是는 逆方向입니다.

		With decimal gearhead																												
	Speed (rpm)	500	300	200	180	150	120	100	90	75	60	50	30	20	15	10	9	7.5	6	5	3	2	1.5	1	0.9	0.75				
	Gear reduction ratio	50Hz	3	5	7.5	—	10	12.5	15	—	20	25	30	50	75	100	150	200	250	300	360	600	750	1000	1500	—	2000			
		60Hz	3.6	6	9	—	10	15	18	—	20	—	30	36	60	90	120	180	—	200	—	250	300	360	600	900	1200	1800	2000	—
	Maximum permissible torque (kg·cm)		6.7	11	16	18	23	28	33	36	45	54	65	100	100	100	100	100	100	100	100	100	100	100	100	100	100	—	—	
	Maximum permissible torque (kg·cm)		10	16	24	27	32	40	48	54	64	77	93	155	200	200	200	200	200	200	200	200	200	200	200	200	200	200	200	
	Maximum permissible torque (kg·cm)		14	23	35	38	46	58	69	77	92	111	113	200	200	200	200	200	200	200	200	200	200	200	200	200	200	200	200	
			—	—	—	—	—	—	—	—	—	—	—	216	300	300	300	300	300	—	—	300	300	300	300	300	300	—	—	

Note : The box (□) represents the desired gear reduction ratio, which thereby becomes part of the code for geared motor.

Capacitor



Option

Dimensions of Capacitor (mm)

Motor Type	Capacitor Type	L	W	D	H	T
M9IA40G4DU	100V MOPC10M20	39.5	26.7	37	32	4
	115V 120V MOPC8M23	39.5	22	32.5	30.5	4
M9IC60G4DU	100V MOPC15M20	39.5	26.7	37	41	4
	115V 120V MOPC12M23	39.5	26.7	37	41	4
M9IC90G4DU	100V MOPC25M20	50.2	31	41	42	4
	115V 120V MOPC19M23	50.2	31	41	42	4

Geared motor maximum permissible torque table [kg·cm]

Note : rpm figures are based on synchronous speed. The actual output rpm, under rated torque conditions, is about 2～20% less than synchronous speed. A grey background indicates that the output shaft of the geared motor rotates in the same direction as the output shaft of the motor. A white background indicates rotation in the opposite direction.

UL Standard Motor / Single Phase Reversible

UL規格批准馬達 單相可逆式馬達

UL규격 인정 모터 단상 리버시블 모터

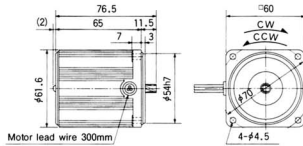
Motor

M6RA4G4DU 4P 4W 100-115-120V

Scale 1/4 Unit mm

60
mmSQ,
4W

Weight 0.56kg
helical gear
module 0.5
number of teeth 10

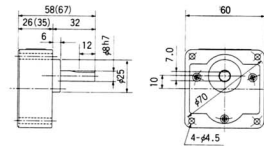


Motor lead wire 300mm

Gear Head

Scale 1/4 Unit mm

M6GA□M (metal bearing type) weight 0.34kg
M6GA□B (ball bearing type)

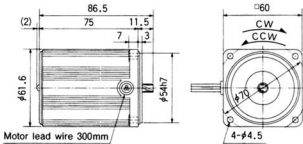


Note: The value in "()" is for gear ratio of 1/20 or larger.

M6RA6G4DU 4P 6W 100-115-120V

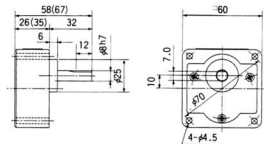
60
mmSQ,
6W

Weight 0.67kg
helical gear
module 0.5
number of teeth 10



Motor lead wire 300mm

M6GA□M (metal bearing type) weight 0.34kg
M6GA□B (ball bearing type)

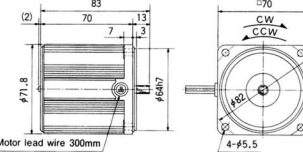


Note: The value in "()" is for gear ratio of 1/20 or larger.

M7RA10G4DU 4P 10W 100-115-120V

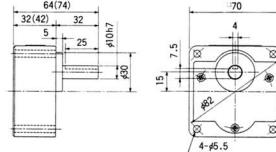
70
mmSQ,
10W

Weight 0.84kg
helical gear
module 0.5
number of teeth 10



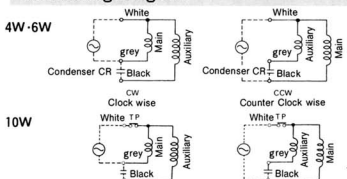
Motor lead wire 300mm

M7GA□M (metal bearing type) weight 0.54kg
M7GA□B (ball bearing type)



Note: The value in "()" is for gear ratio of 1/20 or larger.

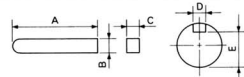
Connecting Diagram



TP: Thermal protector (built-in)

Key and Key Slot

M7GA□M (B)



Type	A	B	C	D	E
M7GA□M (B)	25	4 ₀ ⁰ _{-0.030}	4 ₀ ⁰ _{-0.030}	4 ₀ ^{+0.060} _{+0.010}	7.5 ₀ ⁰ _{-0.15}

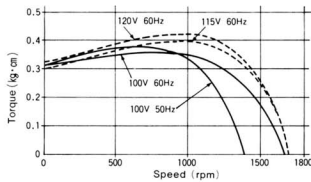
Specifications

Size mmqg	Type	poles	Output (W)	Voltage (V)	Frequency (Hz)	Duty	Rated load				Starting Current (A)	Starting Torque (kg-cm)	Capacitor μF(V)	Applied gearhead type		
							Input (W)	Current (A)	Speed (rpm)	Torque (kg-cm)				Metal	Ball	Decimal
60	M6RA4G4DU	4	4	100	50	30min	18	0.18	1050	0.32	0.20	0.30	3(200V)	M6GA□M	M6GA□B	M6GA10XM
				60	20		0.20	1300	0.26	0.22	0.30					
				115	60		19	0.16	1475	0.25	0.20	0.31	2(250V)			
				120	60		20	0.17	1500	0.24	0.20	0.32				
60	M6RA6G4DU	4	6	100	50	30min	22	0.22	1050	0.46	0.24	0.40	3.5(200V)	M6GA□M	M6GA□B	M6GA10XM
				60	24		0.25	1300	0.40	0.26	0.40					
				115	60		22	0.19	1400	0.41	0.24	0.34	2.3(250V)			
				120	60		24	0.19	1525	0.38	0.25	0.42				
70	M7RA10G4DU	4	10	100	50	30min	30	0.30	1150	0.85	0.41	0.58	4.5(200V)	M7GA□M	M7GA□B	M7GA10XM
				60	30		0.30	1525	0.64	0.41	0.58					
				115	60		31	0.28	1500	0.62	0.43	0.53	3.5(250V)			
				120	60		33	0.28	1575	0.61	0.45	0.58				

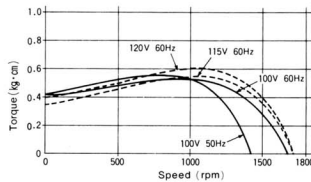


Speed-Torque Curve

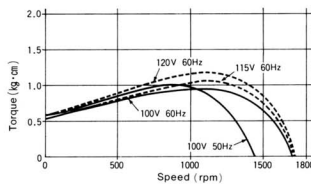
M6RA4G4DU



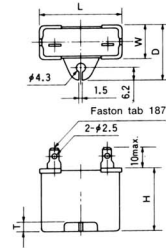
M6RA6G4DU



M7RA10G4DU



Capacitor



Option

■ Dimensions of Capacitor (mm)

Motor Type	Capacitor Type	L	W	D	H	T
M6RA4G4DU	100V MOPC3M20	39.5	16	26.5	30.5	4
	115V 120V MOPC2M25	39.5	16	26.5	30.5	4
M6RA6G4DU	100V MOPC3.5M20	39.5	16	26.5	30.5	4
	115V 120V MOPC2.3M25	39.5	16	26.5	30.5	4
M7RA10G4DU	100V MOPC4.5M20	39.5	16	26.5	30.5	4
	115V 120V MOPC3.5M25	39.5	17.5	28	30.5	4

■ Geared motor maximum permissible torque table [kg·cm]

Note : rpm figures are based on synchronous speed. The actual output rpm, under rated torque conditions, is about 2~20% less than synchronous speed. A grey background indicates that the output shaft of the geared motor rotates in the same direction as the output shaft of the motor. A white background indicates rotation in the opposite direction.

■齒輪馬達最大承受拉力對照表

rpm表列數字乃根據馬達同步運轉之轉速，但在額定扭力負載情況下實際輸出轉速為同步運轉轉速的80~98%。灰色欄乃輸出軸運轉方向與馬達相同時的數據資料，白色欄乃輸出軸運轉方向與馬達相反時的數據資料。

■GEAR HEAD를 직결했을 때의 허용토크도크

★回轉數는 周轉速도의 中間가이세드에 値(값)를 表示하고 있습니다. 一般 回轉數는負荷의 크기에 따라 表示値보다 2%~20% 작은(值)를 표시합니다.

★回轉方向은 □ 이 모터와 同方向 他는 逆方向입니다.

	Speed (rpm)	With decimal gearhead																	
		500	300	200	180	150	120	100	90	75	60	50	30	20	15	10	9	7.5	6
Gear reduction ratio	50Hz	3	5	7.5	—	10	12.5	15	—	20	25	30	50	75	100	150	—	200	250
	60Hz	3.6	6	9	10	—	15	18	20	—	30	36	60	90	120	180	200	—	300
Maximum permissible torque (kg·cm)		0.6	1.1	1.6	1.8	2.3	2.8	3.3	3.6	4.5	5.4	6.5	10	15	21	25	25	25	25
		1.0	1.6	2.5	2.7	3.4	4.1	5.0	5.4	6.7	8.1	9.7	16	23	25	25	25	25	25
Maximum permissible torque (kg·cm)		1.6	2.6	3.9	4.5	5.2	6.5	7.9	8.7	10	13	15	26	37	49	50	50	50	50
		—	—	—	—	—	—	—	—	—	—	—	—	—	—	—	—	—	—

Note : The box (□) represents the desired gear reduction ratio, which thereby becomes part of the code for geared motor.

UL Standard Motor / Single Phase Reversible

UL規格批准馬達 單相可逆式馬達
UL규격 인정 모터 단상 리버시블 모터

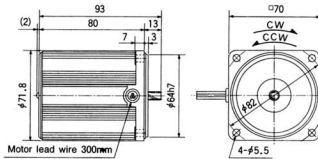
Motor

M7RA15G4DU 4P 15W 100-115-120V

Scale 1/4 Unit mm

70
mmSQ,
15W

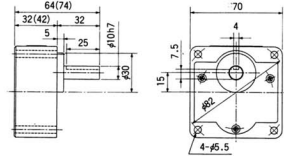
Weight 0.56kg
helical gear
module 0.5
number of teeth 10



Gear Head

Scale 1/4 Unit mm

M7GA□M (metal bearing type) weight 0.54kg
M7GA□B (ball bearing type)

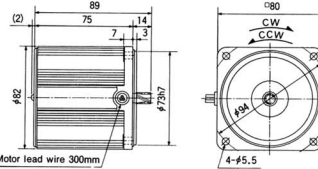


Note : The value in "()" is for gear ratio of 1/20 or larger.

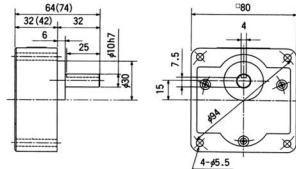
M8RA20G4DU 4P 20W 100-115-120V

80
mmSQ,
20W

Weight 1.2kg
helical gear
module 0.6
number of teeth 11

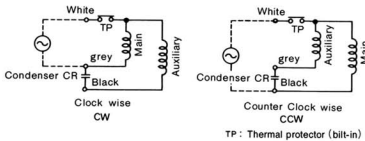


M8GA□M (metal bearing type) weight 0.68kg
M8GA□B (ball bearing type)



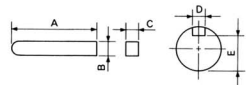
Note : The value in "()" is for gear ratio of 1/20 or larger.

Connecting Diagram



Key and Key Slot

M7GA□M (B)
M8GA□M (B)



Type	A	B	C	D	E
M7GA□M (B)	25	4 _{-0.030}	4 _{-0.030}	4 _{+0.060} 0 _{+0.010}	7.5 _{-0.15}
M8GA□M (B)	25	4 _{-0.030}	4 _{-0.030}	4 _{+0.060} 0 _{+0.010}	7.5 _{-0.15}

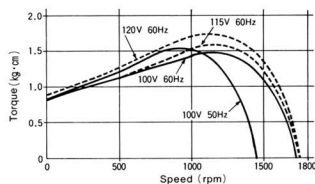
Specifications

Size mmSQ.	Type	poles	Output (W)	Voltage (V)	Frequency (Hz)	Duty	Rated load				Starting Current (A)	Starting Torque (kg cm)	Capacitor μF (V)	Applied gearhead type			
							Input (W)	Current (A)	Speed (rpm)	Torque (kg cm)				Metal	Ball	Decimal	
70	M7RA15G4DU	4	15	100	50	30min	36	0.36	1250	1.1	0.59	0.84	6(200V) 4.5(230V)	M7GA□M	M7GA□B	M7GA10XM	
					60		38	0.38	1575	0.90	0.57	0.84					
					115		39	0.44	1575	0.90	0.61	0.80					
					120		41	0.35	1600	0.90	0.64	0.88					
80	M8RA20G4DU	4	20	100	50	30min	48	0.48	1150	1.7	0.67	1.2	7(200V) 5.5(230V)	M8GA□M	M8GA□B	M8GA10XM	
					60		48	0.48	1500	1.3	0.67	1.2					
					115		48	0.41	1575	1.2	0.70	1.1					
					120		50	0.42	1600	1.2	0.75	1.3					



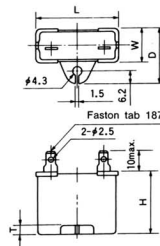
Speed-Torque Curve

M7RA15G4DU



Capacitor

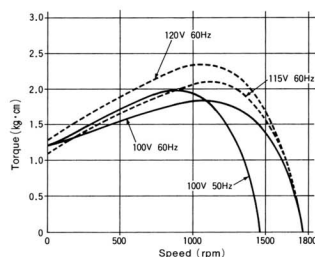
Option



■ Dimensions of Capacitor (mm)

Motor Type	Capacitor Type	L	W	D	H	T
M7RA15G4DU	100V MOPC6M20	39.5	17.5	28	30.5	4
	115V 120V MOPC4.5M23	39.5	16	26.5	30.5	4
M8RA20G4DU	100V MOPC7M20	39.5	22	32.5	30.5	4
	115V 120V MOPC5.5M23	39.5	17.5	28	30.5	4

M8RA20G4DU



■ Geared motor maximum permissible torque table (kg·cm)

Note : rpm figures are based on synchronous speed. The actual output rpm, under rated torque conditions, is about 2~20% less than synchronous speed. A grey background indicates that the output shaft of the geared motor rotates in the same direction as the output shaft of the motor. A white background indicates rotation in the opposite direction.

■齒輪馬達最大承受扭力對照表

rpm表示數字乃根據馬達同步運轉之轉速，但在額定扭力負載情況下實際輸出轉速為同步運轉轉速的80~98%。灰色欄乃輸出軸運轉方向與馬達相同時的數據資料，白色欄乃輸出軸運轉方向與馬達相反時的數據資料。

■ GEAR HEAD를 직결했을 때의 허용토크르크

★回転数は 同期速度の 中歯がいへ드에 値(값)를 表示하고 있습니다. 一般 回転数は負荷의 크기에 따라 表示値보다 2%~20% 적은(值)를 표시합니다.

★回転方向은 □ 이 모터와 同方向 他는 逆方向입니다.

																	With decimal gearhead										
	Speed (rpm)	500	300	200	180	150	120	100	90	75	60	50	30	20	15	10	9	7.5	6	5	3	2	1.5	1			
	Gear reduction ratio	50Hz	50Hz	50Hz	50Hz	50Hz	50Hz	50Hz	50Hz	50Hz	50Hz	50Hz	50Hz	50Hz	50Hz	50Hz	50Hz	50Hz	50Hz	50Hz	50Hz	50Hz	50Hz	50Hz			
	60Hz	60Hz	60Hz	60Hz	60Hz	60Hz	60Hz	60Hz	60Hz	60Hz	60Hz	60Hz	60Hz	60Hz	60Hz	60Hz	60Hz	60Hz	60Hz	60Hz	60Hz	60Hz	60Hz	60Hz			
	Maximum permissible torque (kg·cm)	2.4	2.7	6.0	6.7	8.2	10	12	13	16	19	23	39	50	50	50	50	50	50	50	50	50	50	50			
	Maximum permissible torque (kg·cm)	2.7	5.8	8.7	9.7	12	14	17	19	23	28	34	56	80	80	80	80	80	80	80	80	80	80	80			

Note : The box (□) represents the desired gear reduction ratio, which thereby becomes part of the code for geared motor.

UL Standard Motor / Single Phase Reversible

UL規格批准馬達 單相可逆式馬達

UL규격 인정 모터 단상 리버시블 모터

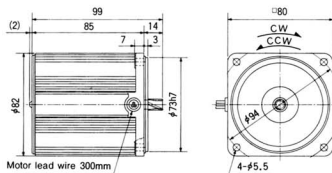
Motor

M8RA25G4DU 4P 25W 100-115-120V

Scale 1/4 Unit mm

80
mmSQ,
25W

Weight 1.5kg
helical gear
module 0.6
number of teeth 11

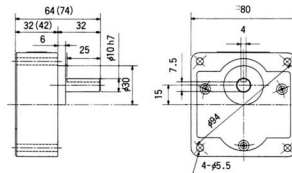


Gear Head

Scale 1/4 Unit mm

M8GA□M (metal bearing type) weight 0.68kg

M8GA□B (ball bearing type)

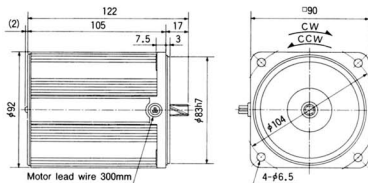


Note : The value in "()" is for gear ratio of 1/20 or larger.

M9RA40G4DU 4P 40W 100-115-120V

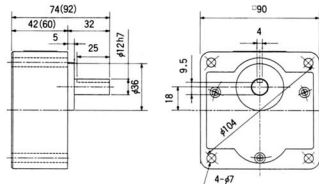
90
mmSQ,
40W

Weight 2.4kg
helical gear
module 0.6
number of teeth 11



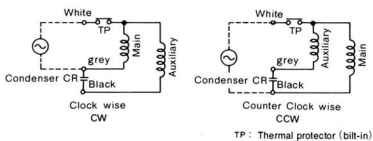
M9GA□M (metal bearing type) weight 1.2kg

M9GA□B (ball bearing type)



Note : The value in "()" is for gear ratio of 1/20 or larger.

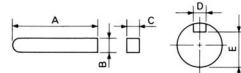
Connecting Diagram



Key and Key Slot

M8GA□M (B)

M9GA□M (B)



Type	A	B	C	D	E
M8GA□M (B)	25	4 ⁰ _{-0.030}	4 ⁰ _{-0.030}	4 ^{+0.060} _{+0.010}	7.5 ⁰ _{-0.15}
M9GA□M (B)	25	4 ⁰ _{-0.030}	4 ⁰ _{-0.030}	4 ^{+0.060} _{+0.010}	9.5 ⁰ _{-0.15}

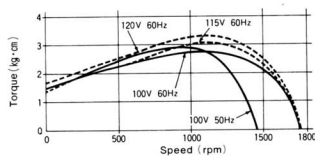
Specifications

Size mmSQ	Type	poles	Output (W)	Voltage (V)	Frequency (Hz)	Duty	Rated load				Starting Current (A)	Starting Torque (kg·cm)	Capacitor μF (V)	Applied gearhead type		
							Input (W)	Current (A)	Speed (rpm)	Torque (kg·cm)				Metal	Ball	Decimal
80	M8RA25G4DU	4	25	100	50	30min	55	0.55	1300	1.9	1.0	1.4	9.5(200V) 7.1(230V)	M8GA□M	M8GA□B	M8GA10XM
					60		57	0.58	1625	1.5	1.0	1.5				
					115		57	0.50	1650	1.5	1.1	1.5				
					120		62	0.51	1650	1.5	1.1	1.7				
90	M9RA40G4DU	4	40	100	50	30min	92	0.95	1150	3.3	1.6	2.6	15(200V) 12(230V)	M9GA□M	M9GA□B	M9GA10XM
					60		92	0.93	1475	2.6	1.6	2.6				
					115		92	0.82	1550	2.5	1.7	2.8				
					120		96	0.81	1575	2.4	1.8	3.1				



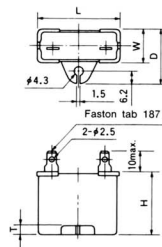
Speed-Torque Curve

M8RA25G4DU



Capacitor

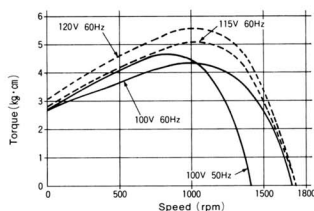
Option



■ Dimensions of Capacitor (mm)

Motor Type	Capacitor Type		L	W	D	H	T
	100V		39.5	22	32.5	30.5	4
M8RA25G4DU	115V	MOPC7M23	39.5	22	32.5	30.5	4
	120V						
M9RA40G4DU	100V	MOPC15M20	39.5	26.7	37	41	4
	115V	MOPC12M23	39.5	26.7	37	41	4
	120V						

M9RA40G4DU



■ Geared motor maximum permissible torque table (kg·cm)

Note : rpm figures are based on synchronous speed. The actual output rpm, under rated torque conditions, is about 2~20% less than synchronous speed. A grey background indicates that the output shaft of the geared motor rotates in the same direction as the output shaft of the motor. A white background indicates rotation in the opposite direction.

■ 齒輪馬達最大承受扭力對照表

rpm表示對準乃根據馬達同步運轉之轉速，但在額定扭力負載情況下實際輸出轉速為同步運轉轉速的80~98%。灰色欄為輸出軸運轉方向與馬達相同時的數據資料。白色欄為輸出軸運轉方向與馬達相反時的數據資料。

■ GEAR HEAD를 직결했을 때의 허용토크

★回轉數는 同期速度의 中間기어배드에 値(값)를 表示하고 있습니다. 一般 回轉數는 負荷의 크기에 따라 表示值보다 2%~20% 작은(值)를 표시합니다.

★回轉方向은 □ 이 모터와 同方向 他는 逆方向입니다.

		Speed (rpm)																With decimal gearhead									
	Gear reduction ratio	500	300	200	180	150	120	100	90	75	60	50	30	20	15	10	9	7.5	6	5	3	2	1.5	1			
	50Hz	3	5	7.5	—	10	12.5	15	—	20	25	30	50	75	100	150	—	200	250	300	500	750	1000	1500			
	60Hz	3.6	6	9	10	—	15	18	20	—	30	36	60	90	120	180	200	—	300	360	600	900	1200	1800			
	Maximum permissible torque (kg·cm)	4.0	6.7	10	11	13	16	20	21	26	32	39	65	80	80	80	80	80	80	80	80	80	80	80			
	Maximum permissible torque (kg·cm)	6.7	11	16	18	23	28	33	36	45	54	65	100	100	100	100	100	100	100	100	100	100	100	100			

Note : The box (□) represents the desired gear reduction ratio, which thereby becomes part of the code for geared motor.

UL Standard Motor / Three Phase Induction

UL規格批准馬達 三相感應馬達

UL규격 인정 모터 삼상 인덕션 모터

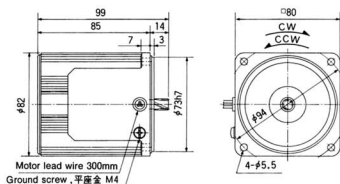
Motor

M8MA25G4GU 4P 25W 220-240V

Scale 1/4 Unit mm

80
mmSQ₁
25W

Weight 1.5kg
helical gear
module 0.6
number of teeth 11

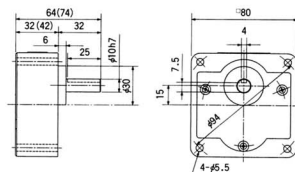


Gear Head

Scale 1/4 Unit mm

M8GA□M (metal bearing type) weight 0.68kg

M8GA□B (ball bearing type)

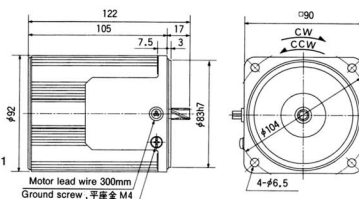


Note : The value in () is for gear ratio of 1/20 or larger.

M9MA40G4GU 4P 40W 220-240V

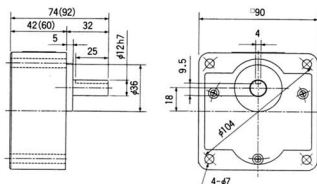
90
mmSQ₁
40W

Weight 2.5kg
helical gear
module 0.6
number of teeth 11



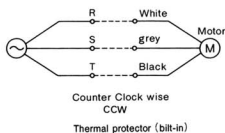
M9GA□M (metal bearing type) weight 1.2kg

M9GA□B (ball bearing type)



Note : The value in () is for gear ratio of 1/20 or larger.

Connecting Diagram

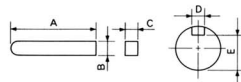


As for CW rotation, change the 2 leads among R. S. T. shown above.

Key and Key Slot

M8GA□M (B)

M9GA□M (B)



Type	A	B	C	D	E
M8GA□M (B)	25	4 ⁰ _{-0.030}	4 ⁰ _{-0.030}	4 ^{+0.060} _{+0.010}	7.5 ⁰ _{-0.15}
M9GA□M (B)	25	4 ⁰ _{-0.030}	4 ⁰ _{-0.030}	4 ^{+0.060} _{+0.010}	9.5 ⁰ _{-0.15}

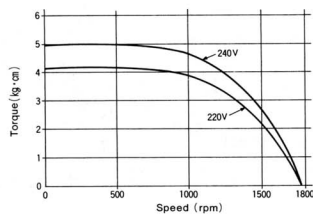
Specifications

Size mmSQ	Type	poles	Output (W)	Voltage (V)	Frequency (Hz)	Duty	Rated load				Starting Current (A)	Starting Torque (kg cm)	Capacitor (μF (V))	Applied gearhead type		
							Input (W)	Current (A)	Speed (rpm)	Torque (kg cm)				Metal	Ball	Decimal
80	M8MA25G4GU	4	25	220	60	CONT.	46	0.17	1600	1.5	0.49	4.1	—	M8GA□M	M8GA□B	M8GA10XM
				240	60		47	0.18	1650	1.5	0.53	4.9				
				220	60		62	0.27	1675	2.3	0.98	6.5				
90	M9MA40G4GU	4	40	220	60	CONT.	64	0.28	1700	2.3	1.1	7.8	—	M9GA□M	M9GA□B	M9GA10XM
				240	60											
				240	60											

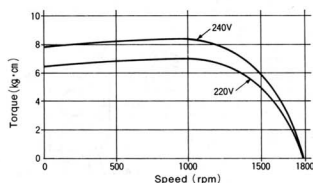


Speed-Torque Curve

M8MA25G4GU



M9MA40G4GU



■ Geared motor maximum permissible torque table (kg·cm)

Note : rpm figures are based on synchronous speed. The actual output rpm, under rated torque conditions, is about 2~20% less than synchronous speed. A grey background indicates that the output shaft of the geared motor rotates in the same direction as the output shaft of the motor. A white background indicates rotation in the opposite direction.

■ 齒輪馬達最大承受扭力對照表

rpm表示數字乃根據馬達同步運轉之轉速，但在額定扭力負載情況下實際輸出轉速為同步運轉轉速的80~98%。灰色欄乃輸出軸運轉方向與馬達相同時的數據資料。白色欄乃輸出軸運轉方向與馬達相反時的數據資料。

■ GEAR HEAD를 직결했을 때의 허용토크크

★ 回転数は、同期速度の中間ギアヘッドに値(2)를 表示하고 있습니다. 一般 回転数は負荷의 크기에 따라 表示値보다 2%~20% 적은(値)를 표시합니다.

★ 回転方向은 이 모터와 同方向 他는 逆方向입니다.

																	With decimal gearhead									
	Speed (rpm)	500	300	200	180	150	120	100	90	75	60	50	30	20	15	10	9	7.5	6	5	3	2	1.5	1		
Gear reduction ratio	50Hz	3	5	7.5	—	10	12.5	15	—	20	25	30	50	75	100	150	—	200	250	300	500	750	1000	1500		
	60Hz	3.6	6	9	10	—	15	18	20	—	30	36	60	90	120	180	200	—	300	360	600	900	1200	1800		
Maximum permissible torque (kg·cm)		4.0	6.7	10	11	13	16	20	21	26	32	39	65	80	80	80	80	80	80	80	80	80	80	80		
Maximum permissible torque (kg·cm)		6.7	11	16	18	23	28	33	36	45	54	65	100	100	100	100	100	100	100	100	100	100	100	100		

UL Standard Motor / Three Phase Induction

UL規格批准馬達 三相感應馬達

UL규격 인정 모터 삼상 인덕션 모터

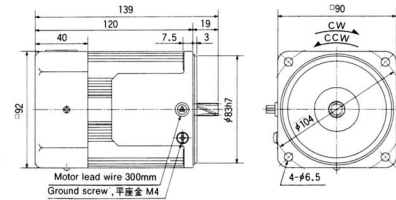
Motor

M9MC60G4GU 4P 60W 220-240V

Scale 1/4 Unit mm

90
mmSQ,
60W

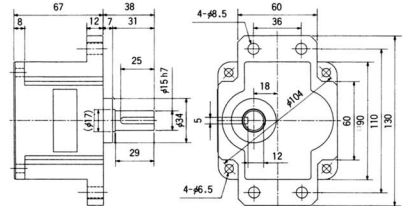
Weight 2.7kg
helical gear
module 0.8
number of teeth 11



Gear Head

M9GC□B (ball bearing type) 1.5kg

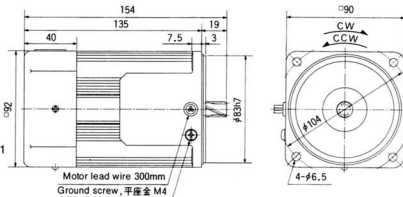
Scale 1/4 Unit mm



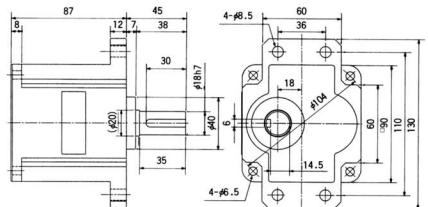
M9MC90G4GU 4P 90W 220-240V

90
mmSQ,
90W

Weight 3.0kg
helical gear
module 0.8
number of teeth 11



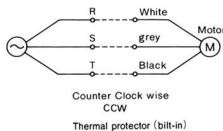
M9GS□B (ball bearing type) 1.9kg



C type 200kg·cm/max. permissible torque

S type 300kg·cm/max. permissible torque

Connecting Diagram

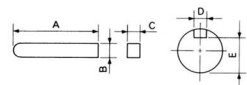


As for CW rotation, change the 2 leads among R, S, T. shown above.

Key and Key Slot

M9GC□B

M9GS□B



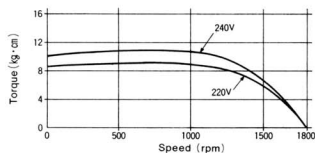
Type	A	B	C	D	E
M9GC□B	25	5 ⁰ _{-0.030}	5 ⁰ _{-0.030}	5 ^{+0.050} ₀	12 ⁰ _{-0.15}
M9GS□B	30	6 ⁰ _{-0.030}	6 ⁰ _{-0.030}	6 ^{+0.050} ₀	14.5 ⁰ _{-0.15}

Specifications

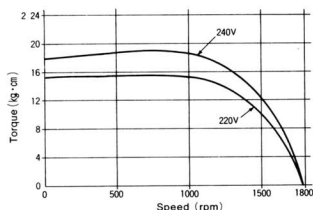
Size mmsq	Type	poles	Output (W)	Voltage (V)	Frequency (Hz)	Duty	Rated load				Starting Current (A)	Starting Torque (kg·cm)	Capacitor μF(V)	Applied gearhead type		
							Input (W)	Current (A)	Speed (rpm)	Torque (kg·cm)				Metal	Ball	Decimal
90	M9MC60G4GU	4	60	220	60	CONT.	97	0.40	1675	3.5	1.4	8.6	—	—	M9GC□B	M9GC10XB
				240	60		97	0.41	1700	3.4	1.5	10			M9GS□B	
90	M9MC90G4GU	4	90	220	60	CONT.	138	0.56	1675	5.3	2.1	15	—	—	M9GC□B	M9GC10XB
				240	60		141	0.59	1700	5.2	2.3	18			M9GS□B	

Speed-Torque Curve

M9MC60G4GU



M9MC90G4GU



■ Geared motor maximum permissible torque table (kg·cm)

Note : rpm figures are based on synchronous speed. The actual output rpm, under rated torque conditions, is about 2~20% less than synchronous speed. A grey background indicates that the output shaft of the geared motor rotates in the same direction as the output shaft of the motor. A white background indicates rotation in the opposite direction.

■ 齒輪馬達最大承受扭力對照表

rpm表列數字乃根據馬達同步運轉之轉速，但在額定扭力負載情況下實際輸出轉速為同步運轉轉速的80~98%。灰色欄乃輸出軸運轉方向與馬達相同時的數據資料。白色欄乃輸出軸運轉方向與馬達相反時的數據資料。

■ GEAR HEAD를 직결했을 때의 허용토크

★回転数は同期速度の中間ギアセドに値(畧)를表示하고 있습니다. 一般 回転数は負荷의 크기에 따라 表示値보다 2%~20% 적은(値)를 표시합니다.

★回転方向은 이 모터의 同方向 他는 逆方向입니다.

		Speed (rpm)																		With decimal gearhead									
		500	300	200	180	150	120	100	90	75	60	50	30	20	15	10	9	7.5	6	5	3	2	1.5	1	0.9	0.75			
Gear reduction ratio	50Hz	3	5	7.5	—	10	12.5	15	—	20	25	30	50	75	100	150	200	—	250	300	500	750	1000	1500	—	2000			
	60Hz	3.6	6	9	10	—	15	18	20	—	30	36	60	90	120	180	200	—	300	360	600	900	1200	1800	2000	—			
Maximum permissible torque (kg·cm)		10	16	24	27	32	40	48	54	64	77	93	155	200	200	200	200	200	200	200	200	200	200	200	200	200			
													155	226	300	300	300	300			300	300	300	300	300	300			
Maximum permissible torque (kg·cm)		14	23	35	38	46	58	69	77	92	111	113	200	200	200	200	200	200	200	200	200	200	200	200	200	200			
													216	300	300	300	300	300			300	300	300	300	300	300			

UL Standard Motor / Electro-Magnetic Brake Motor Single Phase Reversible

UL規格批准馬達 付帶電磁制動器馬達 單相可逆式馬達

UL규격 인장 모타 전자 브레이크 모타 단상 리버시블 모타

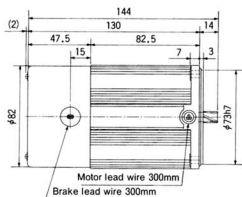
Motor

M8RA25GB4DU 4P 25W 100-115-120V

Scale 1/4 Unit mm

80
mmSQ₁
25W

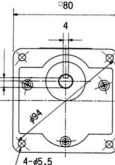
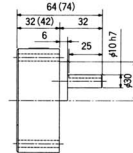
Weight 1.75kg
helical gear
module 0.6
number of teeth 11



Gear Head

Scale 1/4 Unit mm

M8GA□M (metal bearing type) weight 0.68kg
M8GA□B (ball bearing type)

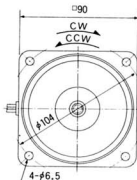
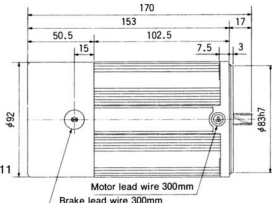


Note : The value in "()" is for gear ratio of 1/20 or larger.

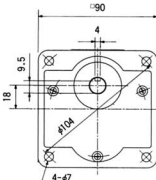
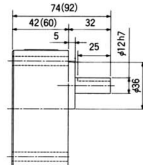
M9RA40GB4DU 4P 40W 100-115-120V

90
mmSQ₁
40W

Weight 2.85kg
helical gear
module 0.6
number of teeth 11

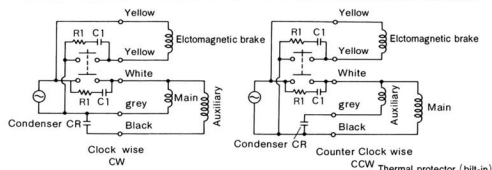


M9GA□M (metal bearing type) weight 1.2kg
M9GA□B (ball bearing type)



Note : The value in "()" is for gear ratio of 1/20 or larger.

Connecting Diagram

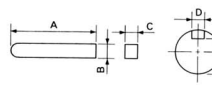


(Caution 1) The brake operates to a holding condition when the electromagnetic brake is 'off'.

(Caution 2) Use R + C inbetween the contacts.
Also DV-OP008 is available as an option.

Key and Key Slot

M8GA□M (B)
M9GA□M (B)



Type	A	B	C	D	E
M8GA□M (B)	25	4 ⁰ _{-0.030}	4 ⁰ _{-0.030}	4 ^{+0.060} _{+0.010}	7.5 ⁰ _{-0.15}
M9GA□M (B)	25	4 ⁰ _{-0.030}	4 ⁰ _{-0.030}	4 ^{+0.060} _{+0.010}	9.5 ⁰ _{-0.15}

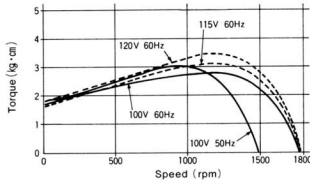
Specifications

Size mmsq	Type	poles	Output (W)	Voltage (V)	Frequency (Hz)	Duty	Rated load				Starting Current (A)	Starting Torque (N-cm)				Capacitor μF (V)	Applied gearhead type		
							Input (W)	Current (A)	Speed (rpm)	Torque (N-cm)							Metal	Ball	Decim
80	M8RA25GB4DU	4	25	100	50	30min	53	0.53	1125	1.8	1.0	1.7	6	0.12	1.00	9.5	M8GA□M	M8GA□B	M8GA10XM
				56	0.57		1625	1.5	1.0	1.7	6	0.12	1.00	(200V)					
				54	0.47		1650	1.5	1.1	1.7	8	0.13	1.00	7					
				58	0.48		1675	1.5	1.1	1.8	8	0.14	1.00	(230V)					
90	M9RA40GB4DU	4	40	100	50	30min	77	0.80	1300	3.0	1.6	3.5	7	0.14	2.00	15	M9GA□M	M9GA□B	M9GA10XM
				81	0.83		1600	2.4	1.6	3.5	7	0.14	2.00	(200V)					
				81	0.71		1650	2.3	1.7	3.5	9	0.15	2.00	12					
				85	0.72		1675	2.3	1.8	3.9	10	0.15	2.00	(230V)					



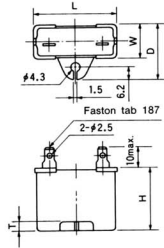
Speed-Torque Curve

M8RA25GB4DU



Capacitor

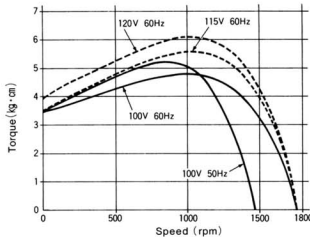
Option



■Dimensions of Capacitor (mm)

Motor Type	Capacitor Type	L	W	D	H	T
M8RA25GB4DU	100V MOPC9.5M20	39.5	22	32.5	30.5	4
	115V 120V MOPC7M23	39.5	22	32.5	30.5	4
M9RA40GB4DU	100V MOPC15M20	39.5	26.7	37	41	4
	115V 120V MOPC12M23	39.5	26.7	37	41	4

M9RA40GB4DU



■Geared motor maximum permissible torque table (kg·cm)

Note : rpm figures are based on synchronous speed. The actual output rpm, under rated torque conditions, is about 2~20% less than synchronous speed. A grey background indicates that the output shaft of the geared motor rotates in the same direction as the output shaft of the motor. A white background indicates rotation in the opposite direction.

■齒輪馬達最大承受扭力對照表

rpm表示數字乃根據馬達同步運轉之轉速，但在額定扭力負載情況下實際輸出轉速為同步運轉轉速的80~98%。灰色欄乃輸出軸運轉方向與馬達相同時的數據資料。白色欄乃輸出軸運轉方向與馬達相反時的數據資料。

■GEAR HEAD를 直結했을 때의 許容토크르크

★回轉數는 同期速度의 半面기어減드에 値(값)를 表示하고 있습니다. 一般 回轉數는負荷의 크기에 따라 表示值보다 2%~20% 작은(值)를 표시합니다.

★回轉方向은 □ 이 모터와 同方向 他는 逆方向입니다.

	Speed (rpm)	With decimal gearhead																	
		500	300	200	180	150	120	100	90	75	60	50	30	20	15	10	9	7.5	6
Gear reduction ratio	50Hz	3	5	7.5	—	10	12.5	15	—	20	25	30	50	75	100	150	—	200	250
	60Hz	3.6	6	9	10	10	15	18	20	—	30	36	60	90	120	180	200	200	300
Maximum permissible torque (kg·cm)		4.0	6.7	10	11	13	16	20	21	26	32	39	65	80	80	80	80	80	80
		6.7	11	16	18	23	28	33	36	45	54	65	100	100	100	100	100	100	100

Note : The box (□) represents the desired gear reduction ratio, which thereby becomes part of the code for geared motor.

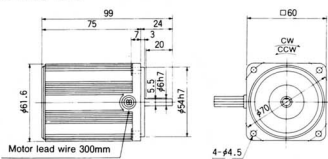
UL Standard Motor

60
mmSQ.

6W

Weight 0.67kg

M61A6S4DU

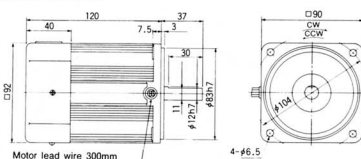


90
mmSQ.

60W

Weight 2.7kg

M91C60S4DU

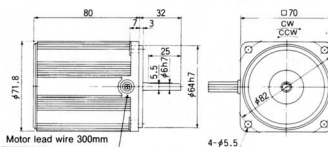


70
mmSQ.

15W

Weight 1.04kg

M71A15S4DU

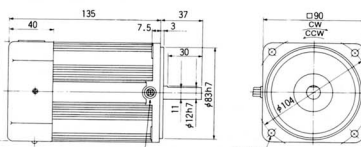


90
mmSQ.

90W

Weight 2.9kg

M91C90S4DU

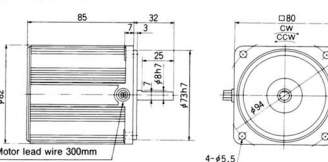


80
mmSQ.

25W

Weight 1.5kg

M81A25S4DU



90
mmSQ.

40W

Weight 2.4kg

M91A40S4DU

