

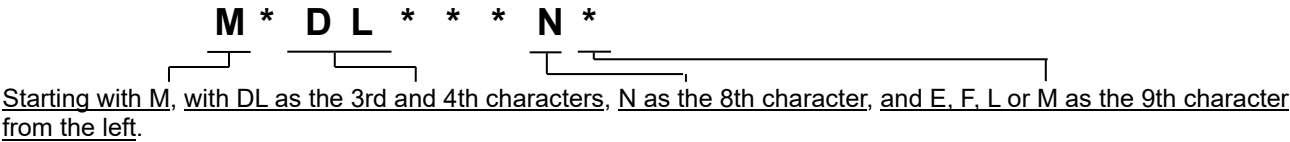
September 1, 2023

Industrial Device Business Division,
Panasonic Industry Co., Ltd.

**Software Update Notice
for AC Servo Driver (MINAS A6NE/A6NF/A6NL/A6NM Series)**

Thank you for your daily support and efforts to our business.
As described below, we will update the software version for MINAS A6NE, A6NF, A6NL (Special Order Products) and A6NM (Special Order Products) Series.
We would appreciate your understanding and cooperation with this matter.

- Affected Models:
AC Servo drivers of all MINAS A6NE, A6NF, A6NL and A6NM Series.
Part number:



- Change schedule:
Starting from September 2023 production lot onwards.
- Description and Reason for the Change:
The software version will be update from Ver1.27 to Ver1.28 for functionality improvement purposes.

■ Description of the Change:

No.	Function	Ver1.27	→	Ver1.28
1	Excessive position deviation warning	Not supported		<Pr6.105> Added "Excessive position deviation warning selection"

[Details of Changed Contents]

- No. 1) Position deviation warning function added.
- Parameters for excessive position deviation warning setting function <Pr6.105> are added.
 - If excessive position deviation warning setting <Pr6.105> is "0," excessive position deviation warning detection is disabled.
- If the position deviation pulse exceeds the set value of <Pr6.105> ,
- A) "AA" is displayed on the 7-segment LED on the front panel on warning.
- B) Warning output signal can be output externally from the interface by setting the warning output setting parameter "warning output 1" <Pr4.40> or "warning output 2" <Pr4.41>.
- Due to the warning, the motor will continue to operate.
 - Previously offered functions can be used by setting up the previous parameter file for the driver.

* For the details of changed contents,

- SX-DSV3077: MINAS A6N Series Technical Reference - Functional Specification –
- SX-DSV3078: MINAS A6N Series Technical Reference - RTEX Communication Specification –

◆ Technical Reference Download page)

https://www3.panasonic.biz/ac/e/dl/manual/index.jsp?series_cd=3887

- Setup support software (PANATERM) for Ver1.28 will be available from Ver.6.0.9.0 onward.
- Previously offered functions can be used by setting up the previous parameter file for the driver.

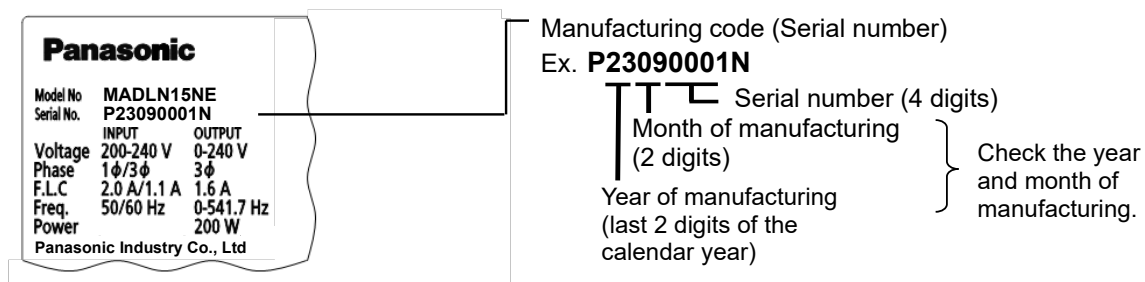
■ Method of checking:

- Method by checking the software version

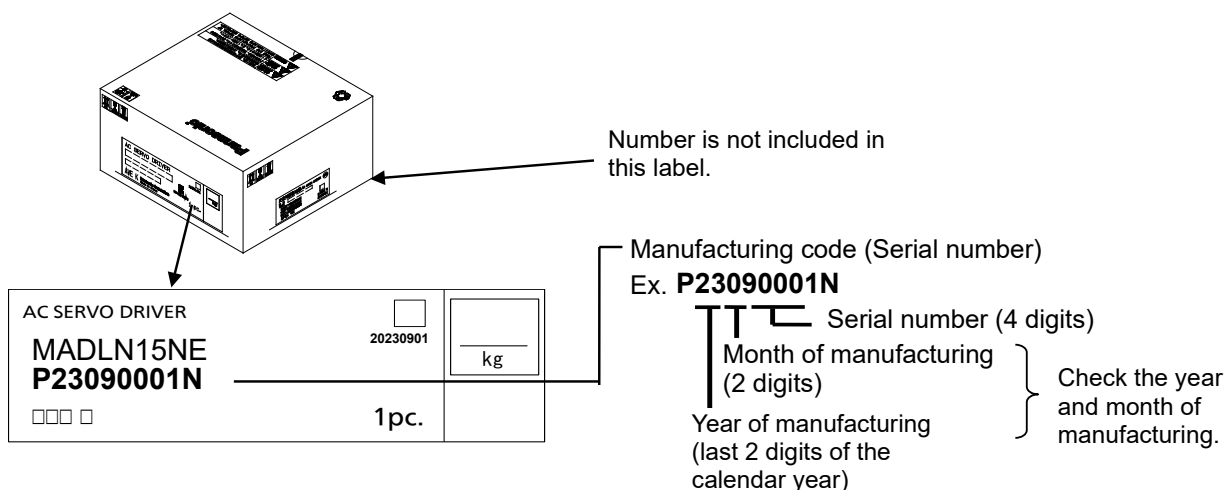
The software version can be checked by using the setup support software (PANATERM), or by checking from the RTEX communication command.

- Method of checking the year and month of manufacturing from the manufacturing code (serial number)

The manufacturing code (serial number) shown on the name plate located on the side of the product conforms to the following rule.



The manufacturing code (serial number) shown on the label attached to the front surface of the package box follows the following rule.



END